

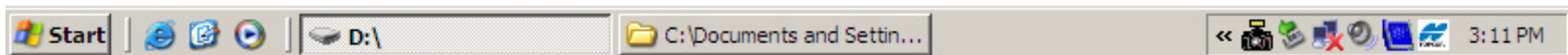
GUIDANCE STEER ASSIST PROGRAM

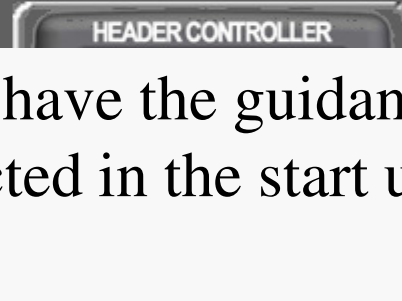
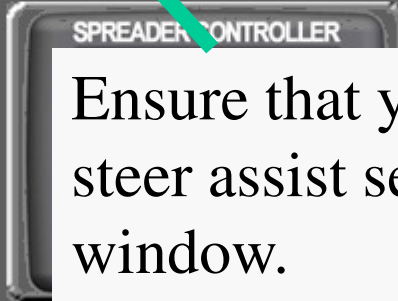
Follow through this guide to set up your Guidance in the X20

Through out this instruction any selections that are crossed out only apply to customer using the Topcon ProSteer system . The settings for the ProSteer are located in the Guidance installation manual that came with the X20 monitor.



Double tap the X20 product selector to get started.





Ensure that you have the guidance steer assist selected in the start up window.

USE ZYNX LINK

STOP

UPGRADE

ALIGN

SETUP

START

STATUS BAR



**FUNCTION
BUTTONS**

Camera Buttons

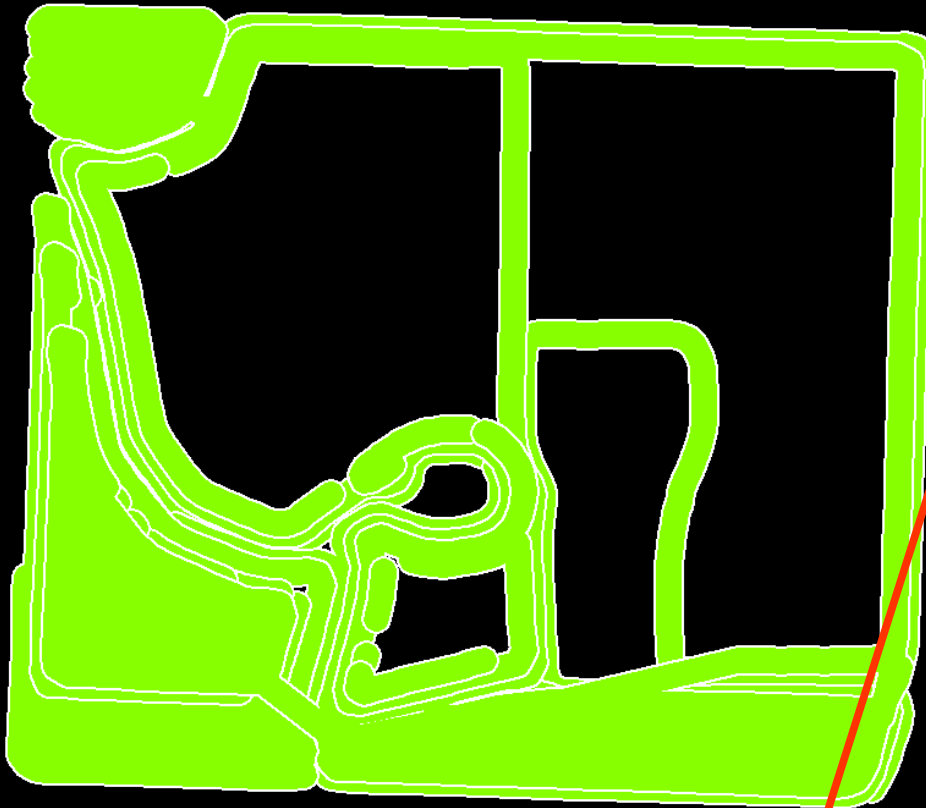
STATUS BAR

No valid position.

DGPS

NO GPS

DISENGAGED



COWS Big Bang Theory Monitor harnesses Seeding System Work 02523908_... in color.pdf FASTWIZ.EXE BMSRUN.INI SHIPSched... Kamsack NH3 Max.doc tire fax.doc MB015-2011 Web Site_f...

GUIDE FIELD GENERAL SET-UP VIEW CAMERA EXIT OFF

DGPS details window . Pressing this button opens window.

STATUS BAR


No valid position.

The GPS details window gives the speed, direction traveled, altitude, Number of satellites that are being received, the HDOP of the satellite signal, the Status of the DGPS signal (8 is required for good signal). You also have the ability to check distance, see how much has been seeded and the time spent seeding and the differential is the quality of the GPS.

GPS Details [X]


Speed	<input type="text" value="0"/>	km/hr	No Sats	<input type="text" value="0"/>
Dir	<input type="text" value="0"/>	deg	HDOP	<input type="text" value="0"/>
Alt	<input type="text" value="0"/>	m	Status	<input type="text" value="1"/>

Trip Distance

<input type="text" value="0"/>	km	RESET 
--------------------------------	----	--

Statistics

Area	<input type="text" value="0"/>	Ha	Time	<input type="text" value="0"/>	Hrs
-------------	--------------------------------	-----------	-------------	--------------------------------	------------

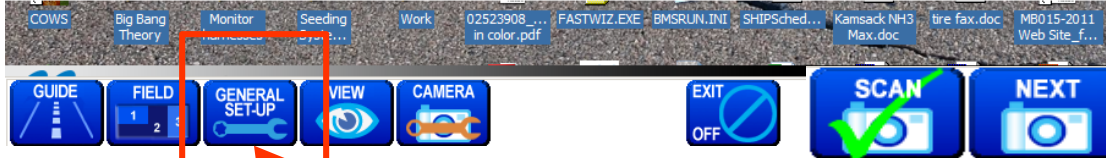
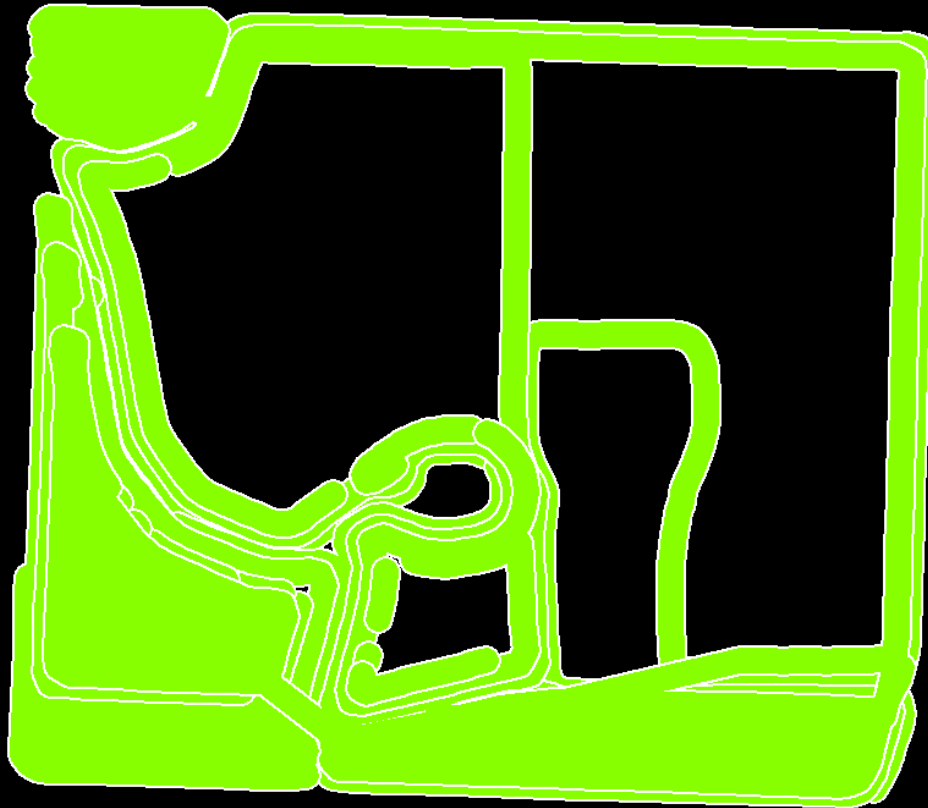
Differential **Tilt** **OK** 

No valid position.



NO GPS

DISENGAGED



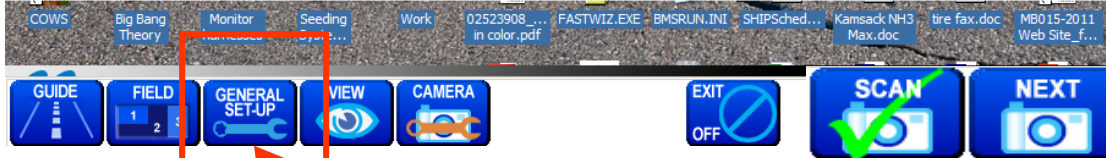
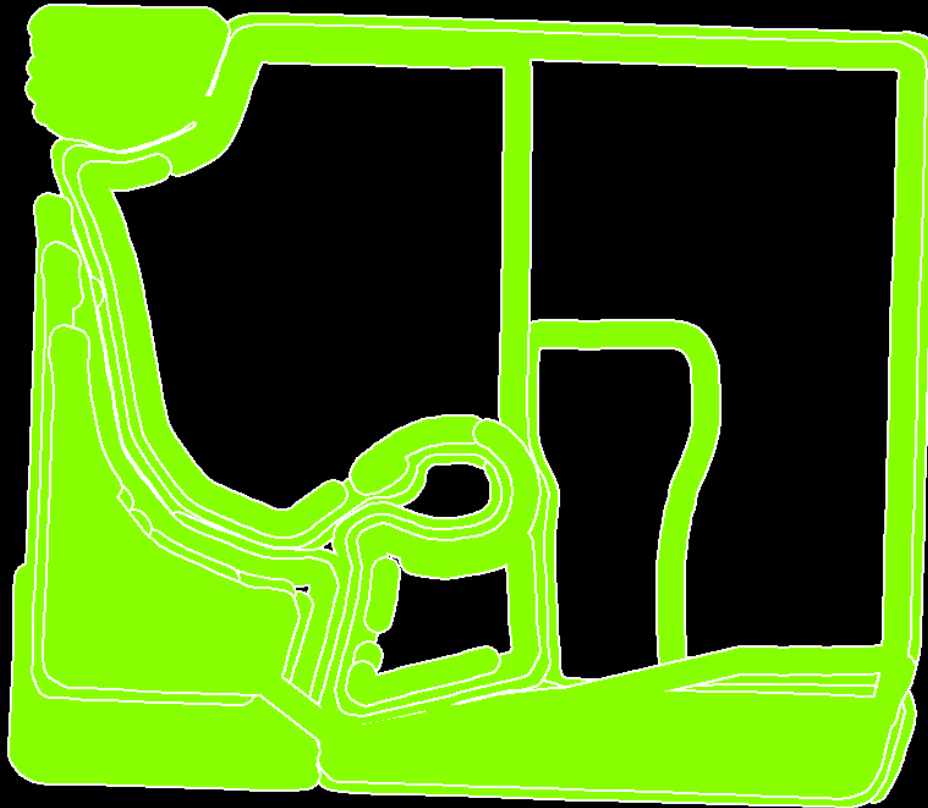
Pressing the General set up button will open another window for settings

No valid position.

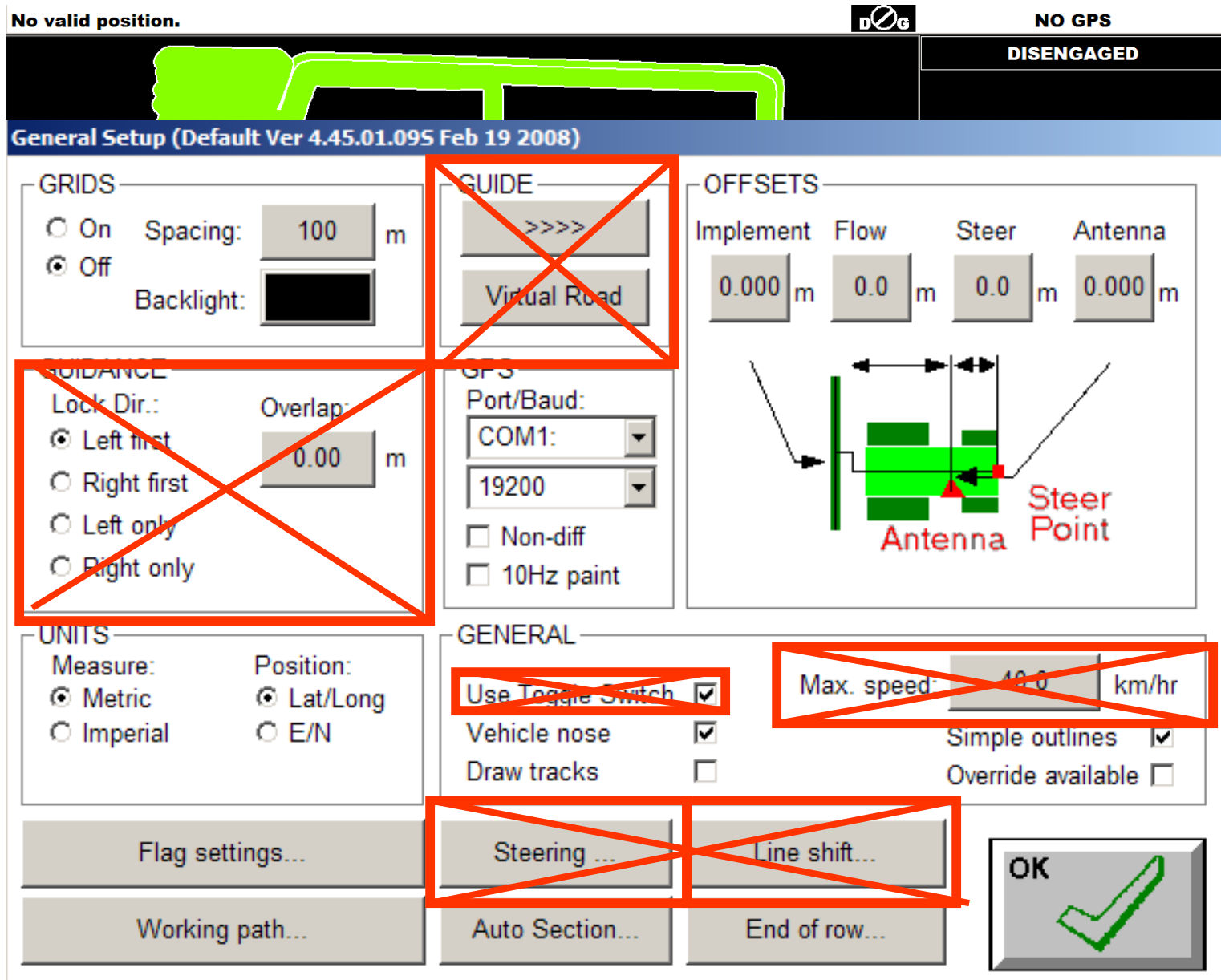


NO GPS

DISENGAGED



Pressing the General set up button will open another window for settings



General set up window. Boxes crossed out do not apply

No valid position.

DOG

NO GPS

DISENGAGED

This bar gives you the version of software.

General Setup (Default Ver 4.45.01.095 Feb 19 2008)

GRIDS

On Spacing: 100 m

Off

Backlight:

GUIDE

OFFSETS

Implement	Flow	Steer	Antenna
0.000 m	0.0 m	0.0 m	0.000 m

Antenna Steer Point

EVASION

Lock Dir.: Overlap: 0.00 m

Left first

Right first

Left only

Right only

GPS

Port/Baud:

COM1:

19200

Non-diff

10Hz paint

UNITS

Measure: Position:

Metric Lat/Long

Imperial E/N

GENERAL

Use Toggle Switch

Max. speed: 10.0 km/hr

Vehicle nose

Simple outlines

Draw tracks

Override available

Flag settings...

Working path...

General set up window. Boxes crossed out do not apply

No valid position.



NO GPS

DISENGAGED

General Setup (Default Ver 4.45.01.095 Feb 19 2008)

GRIDS

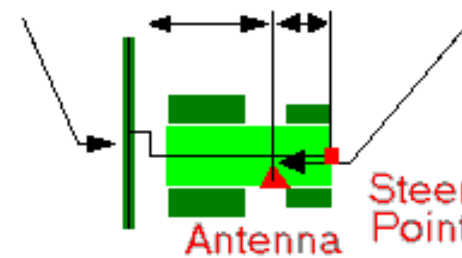
On Spacing: m
 Off
Backlight:

The **GRIDS** box allows you to turn a grid on / off on the coverage map. You can also set the size of the grids and change the background color of the coverage map.

GUIDE

OFFSETS

Implement	Flow	Steer	Antenna
<input type="text" value="0.000"/> m	<input type="text" value="0.0"/> m	<input type="text" value="0.0"/> m	<input type="text" value="0.000"/> m



GPS

Port/Baud:

 Non-diff
 10Hz paint

UNITS

Measure:	Position:
<input checked="" type="radio"/> Metric	<input checked="" type="radio"/> Lat/Long
<input type="radio"/> Imperial	<input type="radio"/> E/N

GENERAL

Use Toggle Switch
Vehicle nose
Draw tracks
Max. speed: km/hr
Simple outlines
Override available

Flag settings...

Steering ...

Line shift...

Working path...

Auto Section...

End of row...

OK



No valid position. NO GPS

DISENGAGED

General Setup (Default Ver 4.45.01.095 Feb 19 2008)

GRIDS

On Spacing: m

Off

Backlight:

GUIDE

OFFSETS

Implement	Flow	Steer	Antenna
<input type="text" value="0.000"/> m	<input type="text" value="0.0"/> m	<input type="text" value="0.0"/> m	<input type="text" value="0.000"/> m

Antenna Steer Point

The **UNITS** box allows you to select between metric and imperial units of measurements and you can choose to have you position displayed in Latitude/Longitude or Eastern/Northing

UNITS

Measure: Metric Imperial

Position: Lat/Long E/N

GPS

Port/Baud: COM1:

Non-diff

10Hz paint

GENERAL

Use Toggle Switch

Vehicle nose

Draw tracks

Max. speed: km/hr

Simple outlines

Override available

Flag settings...

Working path...

Steering ...

Auto Section...

Line shift...

End of row...

OK

General set up window. Boxes crossed out do not apply

No valid position.



NO GPS

DISENGAGED

General Setup (Default Ver 4.45.01.095 Feb 19 2008)

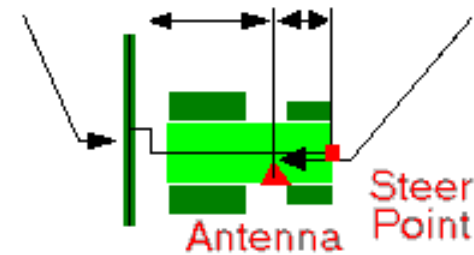
GRIDS

On Spacing: m
 Off Backlight:

GUIDE

OFFSETS

Implement	Flow	Steer	Antenna
<input type="text" value="0.000"/> m	<input type="text" value="0.0"/> m	<input type="text" value="0.0"/> m	<input type="text" value="0.000"/> m



GPS box allows the correct port which should match the Y cable's long lead input into the back of the X20 monitor and the baud rate has to match the signal from the antenna. Non-diff has to be checked of if you are using an antenna not capable of DGPS. 10Hz paint should be used if you are using a receiver with 10 times per second refresh.

GPS

Port/Baud:

 Non-diff
 10Hz paint

GENERAL

Use Toggle Switch
Vehicle nose
Draw tracks
Max. speed: km/hr
Simple outlines
Override available

Flag settings...

Steering ...

Line shift...

Working path...

Auto Section...

End of row...

OK



No valid position.



NO GPS

DISENGAGED

General Setup (Default Ver 4.45.01.095 Feb 19 2008)

GRIDS

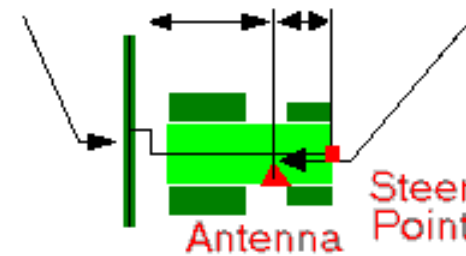
On Spacing: 100 m

~~GUIDE~~

~~>>>>~~

OFFSETS

Implement 0.000 m Flow 0.0 m Steer 0.0 m Antenna 0.000 m



The **OFFSETS** box allows for variance in the location of the antenna. The Antenna offset needs to be used if the antenna is offset from the center of the cab. The flow is the distance from the antenna to the front row of openers. When using an articulating tractor steer and implement should be left at a value of 0.

~~Right only~~

Non-full
 10Hz paint

UNITS

Measure: Metric Imperial
Position: Lat/Long E/N

GENERAL

~~Use Toggle Switch~~
Vehicle nose
Draw tracks

~~Max. speed: 40.0 km/hr~~

Simple outlines
Override available

Flag settings...

~~Steering ...~~

~~Line shift...~~

Working path...

Auto Section...

End of row...

OK



General Setup (Default Ver 4.45.01.095)

GRIDS

On Spacing: m
 Off Backlight:

GUIDANCE

Lock Dir.: Overlap:
 Left first m

Selecting **Flag settings** brings up this box that allows you to pre name your flags to be placed in the field. You can select the box that will show the flags in the field, show the text for the flag and also to play an audible sound as you approach the flag.

Flag Settings [X]

- Show flags**
- Show text**
- Play sounds**

Flag 00	Flag 05
Flag 01	Flag 06
Flag 02	Flag 07
Flag 03	Flag 08
Flag 04	

General Setup (Default Ver 4.45.01.095 Feb 19 2008)

GRIDS
 On Spacing: 100 m
 Off
Backlight: [Black Box]

GUIDANCE
Lock Dir.: Overlap: 0.00 m
 Left first
 Right first
 Left only
 Right only

UNITS
Measure: Metric Imperial
Position: Lat/Long E/N

Flag settings...
Working path...

Working Path

Drive: C:

Directory: [Left Arrow] [Right Arrow]

..
Field_Data
Lynx
Microsoft.VC80.CRT
Microsoft.VC80.MFC

C:\LYNX

OK [Green Checkmark] CANCEL [Red X]

The **Working path** displays the location of the folder on the X20 hard drive where the fields are saved. **The working path must be C:\Lynx\Field_Data and should not be changed as this is where the 9 field screens are saved. If the working path is changed the X20 Guidance will not be able to display and load the 9 field screens.**

Automatic Section Control uses the DGPS to control the switching of tank clutches on and off before entering and exiting headlands and overlapping.

- Selecting the Disabled turns off the automatic section control.
- Enabling the automatic section control gives you 3 options:
 1. Avoid gaps - there will be no gaps - even the smallest area will be covered.
 2. Avoid overlap – the tank will shut off when any part of the drill is overlapping.
 3. Ignore small gaps - the gives you the ability to set the gap size for when the tank will shut off. A small gap size can be entered into this window. (the recommended size for small gap setting is 1.5 feet)
- Limit to boundary – allows the tank to automatically turn off when it travels outside the boundary. The boundary needs to be completed in order for this to work.

Automatic Section Control


Mode


- Disabled**
- Avoid gaps**
- Ignore small gaps**
- Avoid overlap**
- Limit to boundary**

Small Gap Size: **metres**

On Time: **sec**

Off Time: **sec**

OK 

Auto Section...  End of row...

The end of row option is used as a warning as the end of a row is approaching after the headlands have been completed. As it approaches an audible alarm will sound. Have a check in the box beside Use to have enabled. The only when engaged check box only applies to Topcon steering (if not using Topcon steering ensure there is no check mark in the box). You can set the Detection distance, Repeat time and the # of alarms by touching the grey box beside each setting.

End of row detection ✕

Only when engaged: **Use:**

Detection distance: **Metres**

Repeat time: **Seconds**

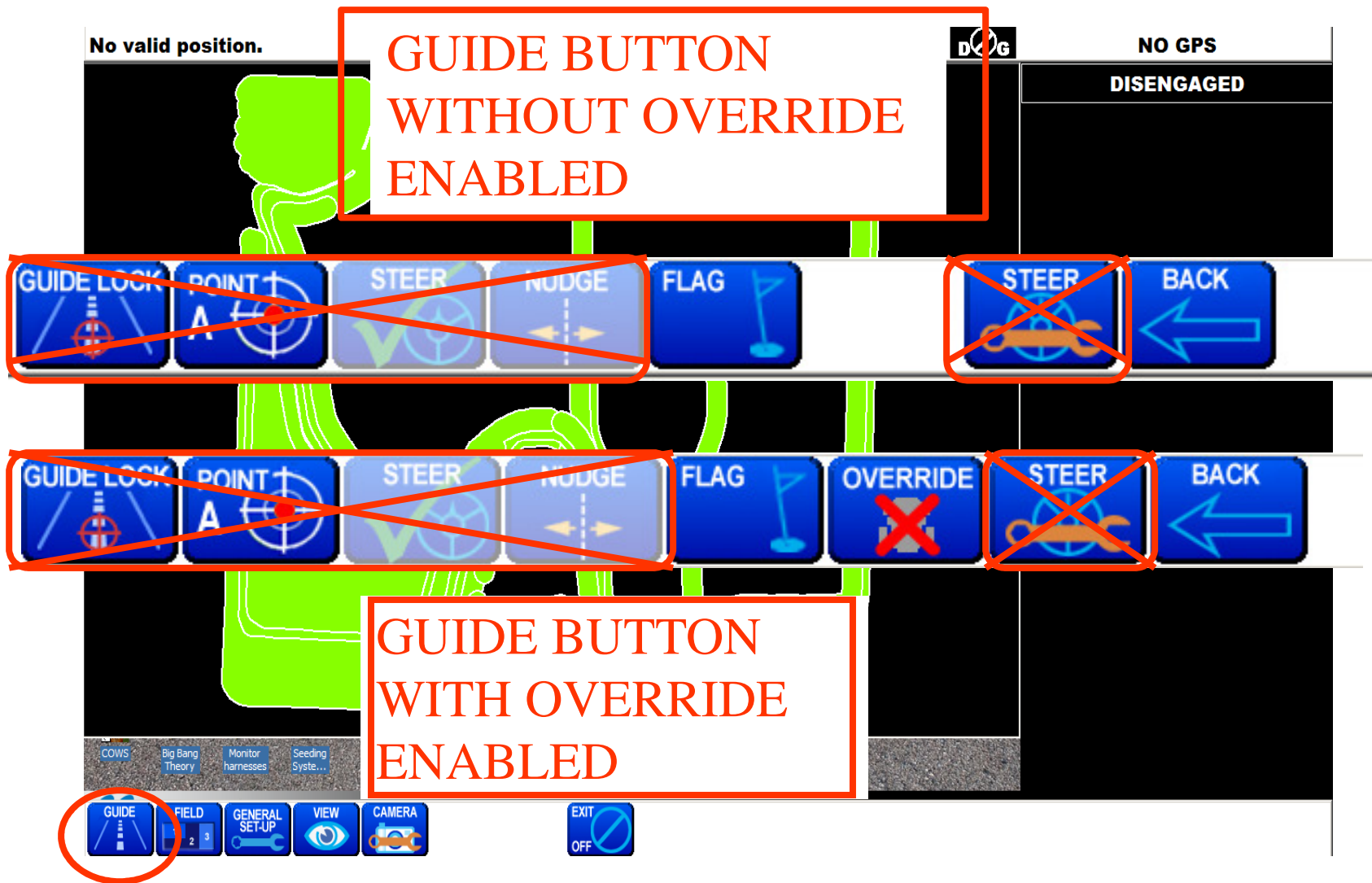
No of alarms:

Right first
 Left only
 Right only

Non-diff
 10Hz paint

UNITS
Measure: Metric Imperial
Position: Lat/Long E/N

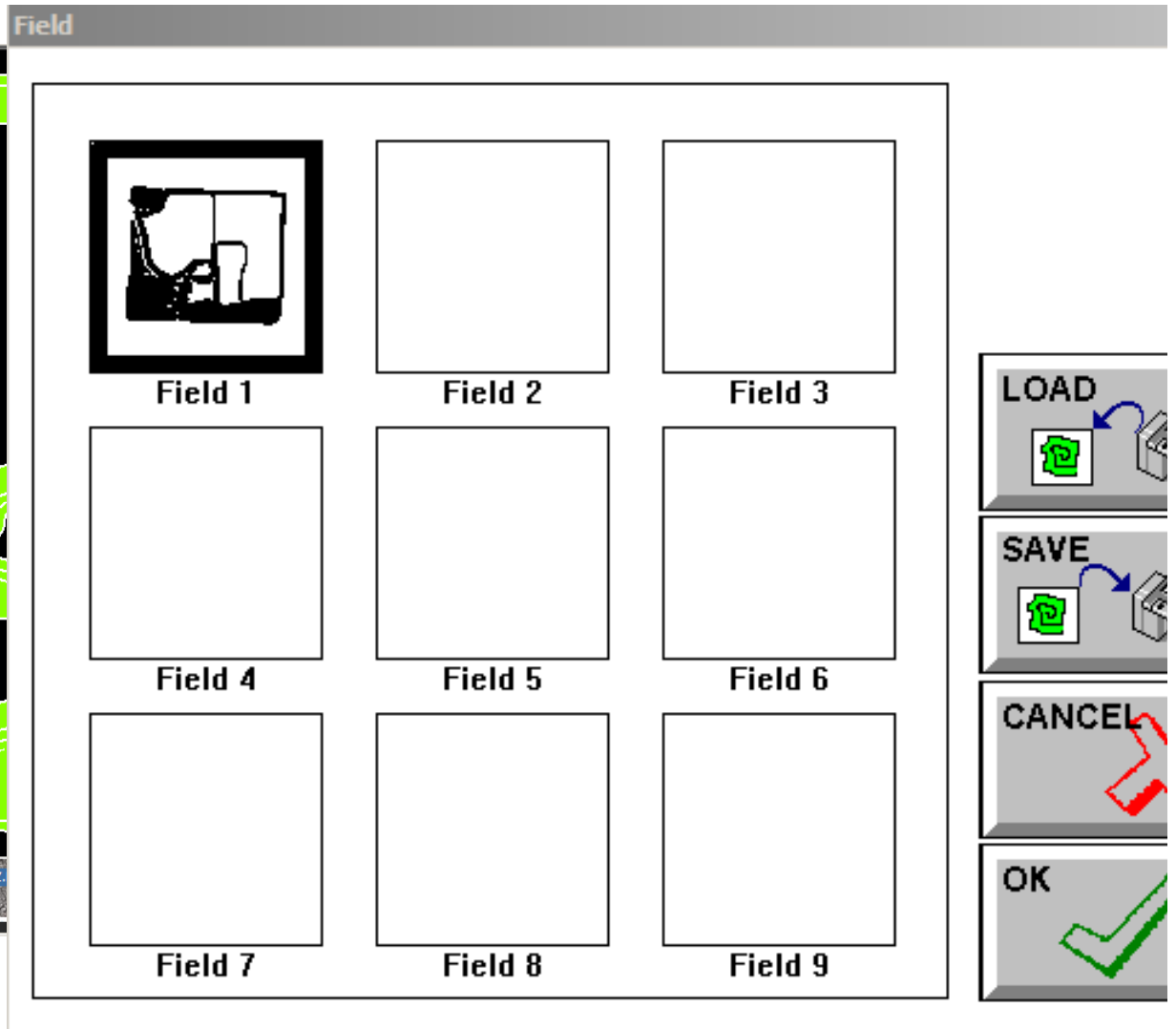
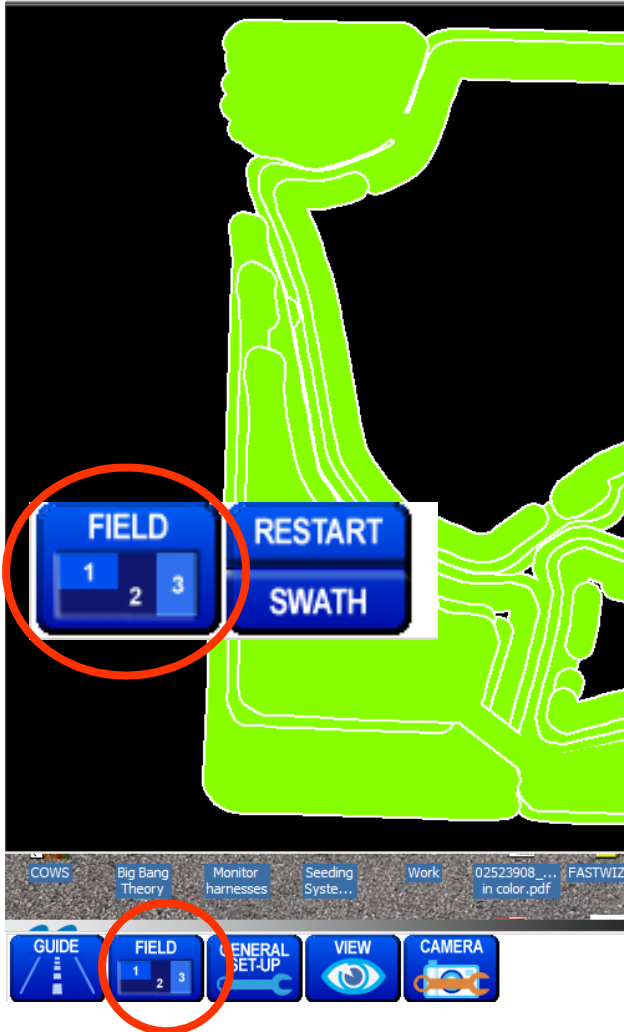
GENERAL
Use Toggle Switch Max. speed: km/hr
Vehicle nose Simple outlines
Draw tracks Override available



Touching the GUIDE function button will expand the guide buttons

- The crossed out buttons are used with TOPCON auto steer and don't apply unless tractor is properly equipped.
- The FLAG button can be used to mark points of interest in the field
- The OVERRIDE button when activated in the GENERAL SETUP allows the operator to drive over and treat areas that have already been covered
- BACK button takes you back to the default function buttons

No valid position.



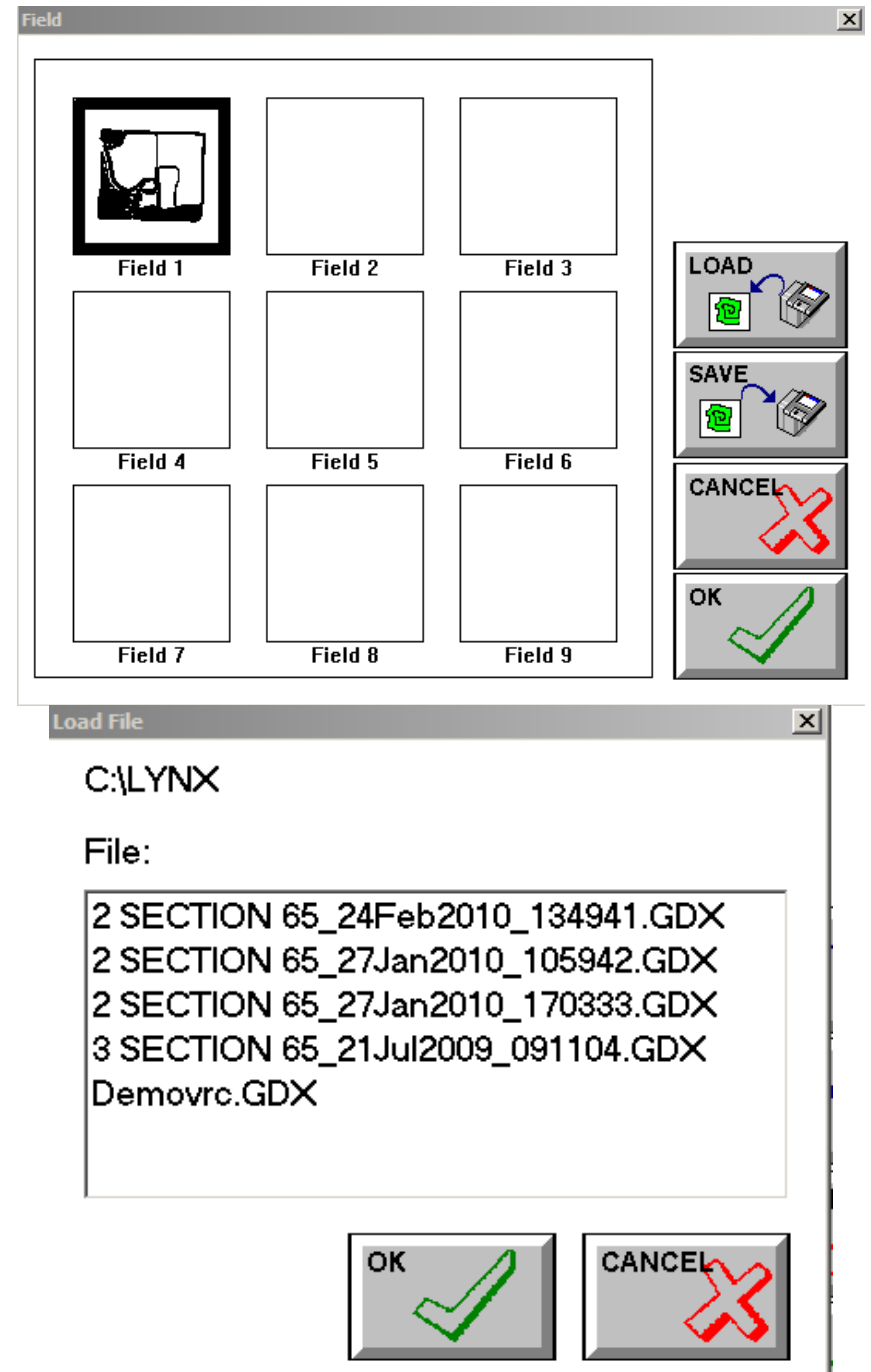
When the FIELD function button is touched it will expand to the FIELD and RESTART SWATH buttons

- When the FIELD button is touched it will open the field menu on the screen. The field menu gives you access to nine fields screens
- RESTART/SWATH button – can clear the field and/or set a new swath value
- BACK button – returns to the default function buttons

In the field menu you have the ability to recall or store nine separate fields, at anytime. Additionally you have the ability to save an infinite number, by using the SAVE button. You can then access the saved files by using the LOAD button. **(it is not recommended that you create large field files. As the field is finished either delete the field or use the SAVE button to save the field to the console)**

To select any of your fields that are loaded into the nine field's touch on that field and it will highlight Field 1.

- If we touch the OK button it will open this field in the guidance screen.
- If all 9 fields are full and we want to save the information from that field so we can load previously saved field or if we want to start a new field we have to save the data in the highlighted field box. This is done by touching the save button and the GDX viewer will open. (Refer to the GDX viewer PDF in the FAQ's on the website for directions on using this feature)
- Once you have the field saved you can now either load a new field by touching the load button which open a selection file on the screen. From this screen you can select the field that you want to load and it will then be loaded into the field that you had highlighted (it will give you a warning asking if you want to clear all previous data on that field. If you want to start a new blank field, after you have touched the OK button and it has loaded the GDX coverage file use the RESTART SWATH button to clear the data that was in the field you loaded.

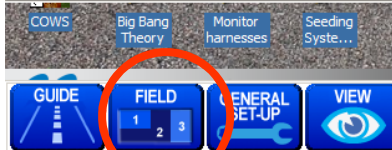
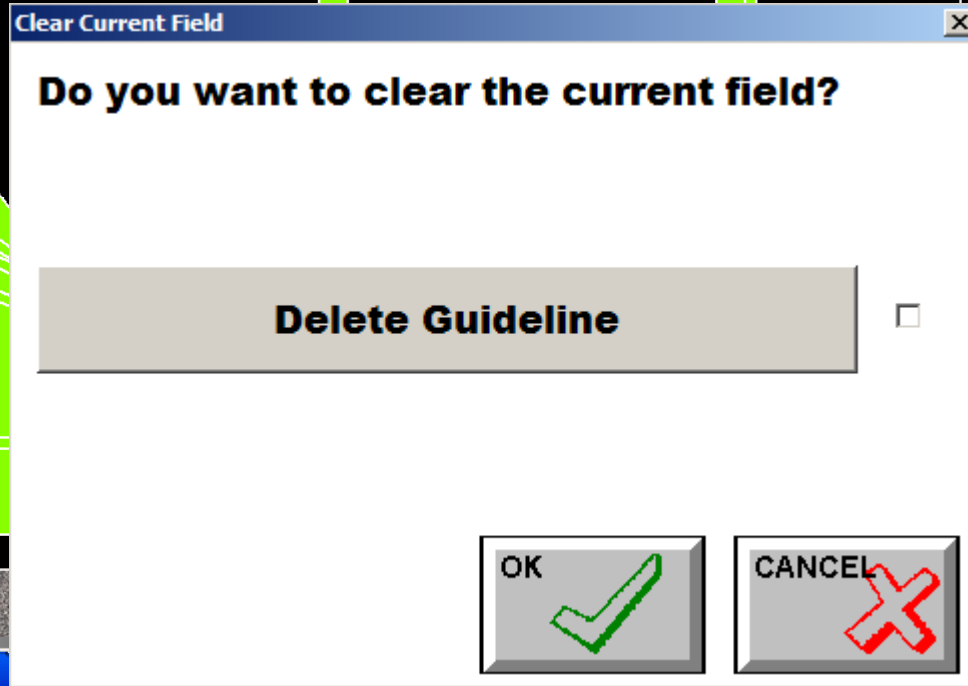
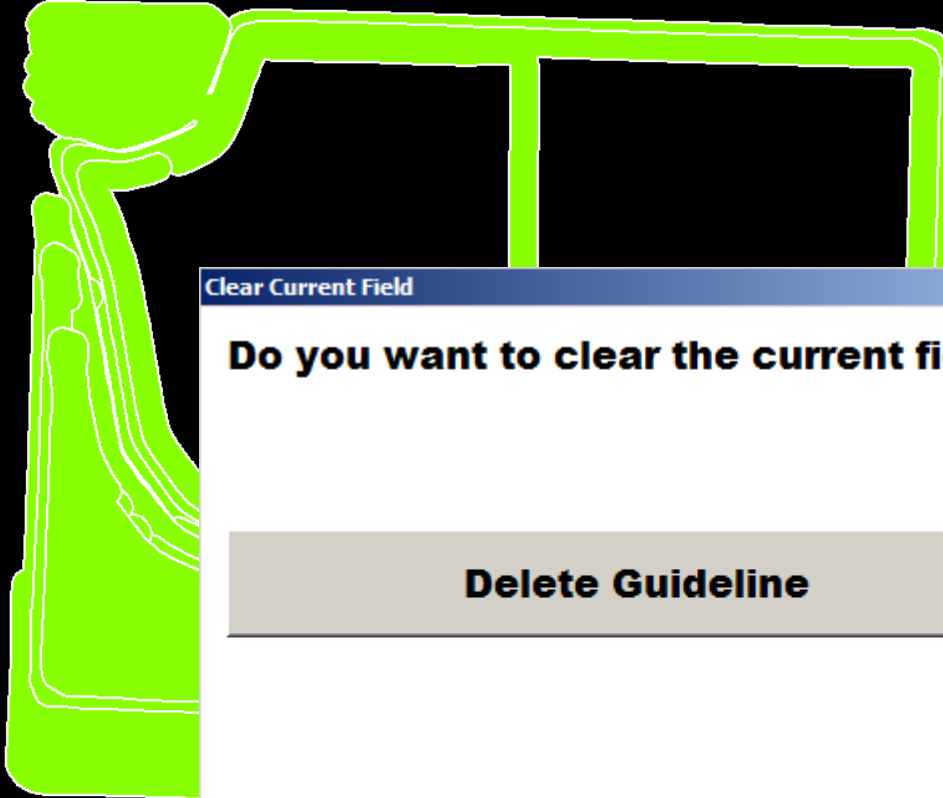


No valid position.

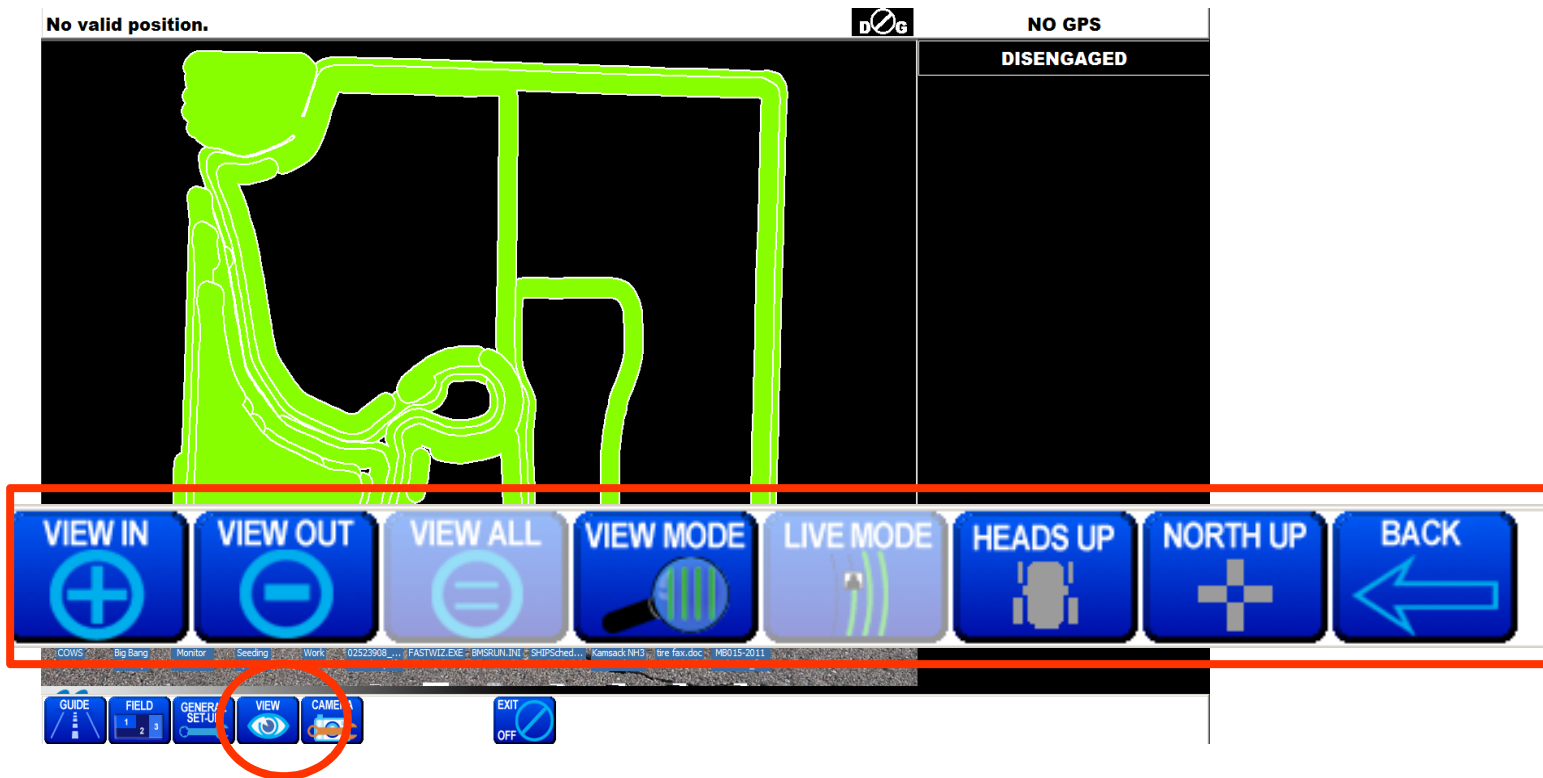


NO GPS

DISENGAGED

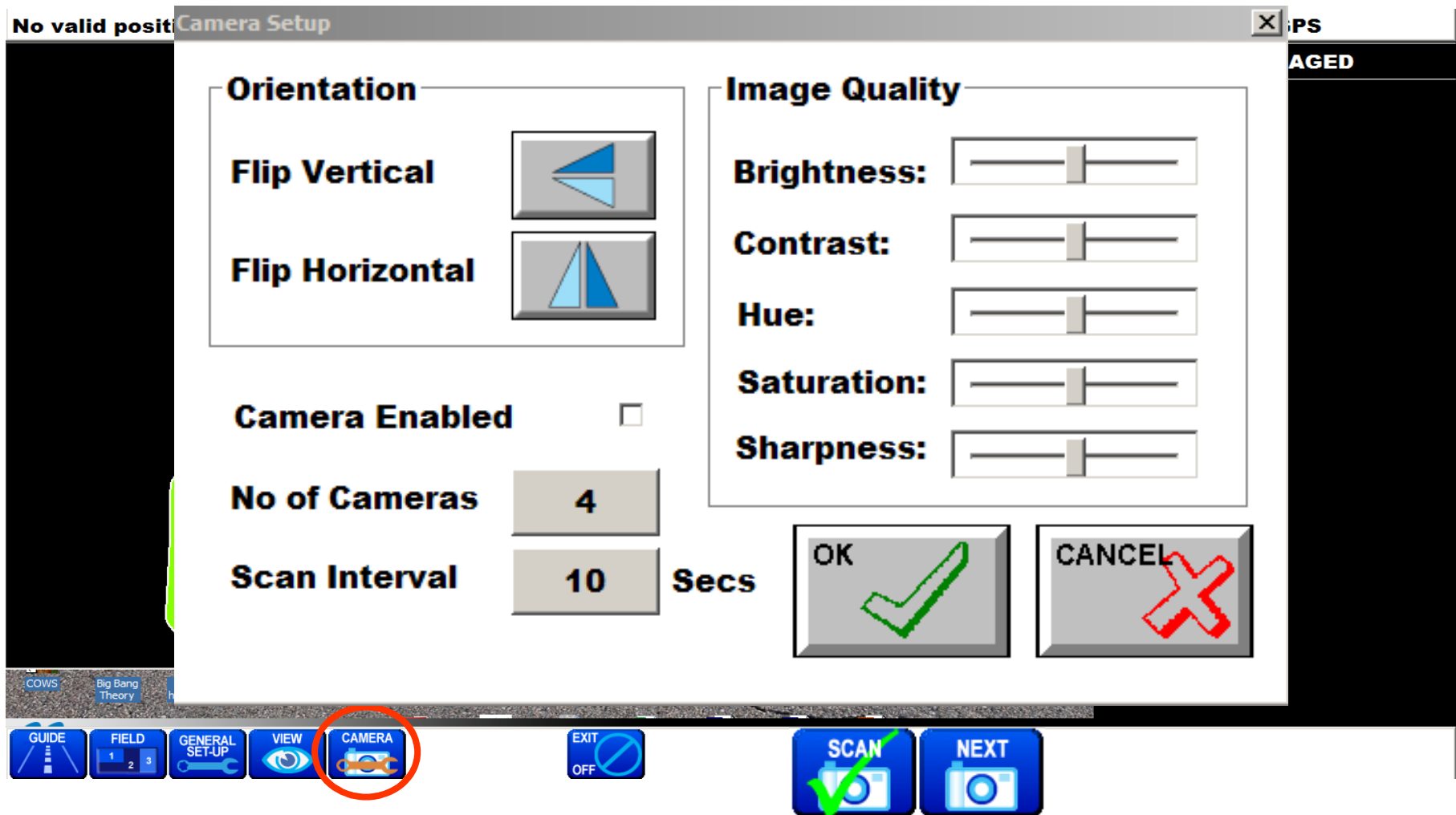


When you touch on the RESTART SWATH button it will bring this window up. It is going to ask you if you want to clear the current field, it is going to ask if want to clear the current guidelines and flag points if you had any in the coverage map (have a check box in the small box at the right by touching on the Delete Guidelines or Delete Flag Points). Once you press the OK button it will clear all previous data.



Touching the view function button expands the view buttons

- VIEW IN button – zooms in on the Coverage Map
- VIEW OUT button – zooms out of the coverage map
- VIEW ALL button – sizes the coverage map to fit within the coverage map screen (VIEW ALL button is only accessible when the VIEW MODE button is selected)
- VIEW MODE button – switches the coverage map screen from live mode to view mode (VIEW MODE allows the operator to view the coverage map without DGPS updating the vehicle position)
- LIVE MODE button – switches the coverage map screen from VIEW MODE to LIVE MODE (LIVE MODE is the default mode, which means the vehicle position is being updated by the DGPS receiver)
- HEADS UP button – selects HEADS UP mode, this is the default mode (the screen is constantly being redrawn with every DGPS update)
- NORTH UP button – selects NORTH UP mode (the screen is only redrawn about every 10 seconds)
- BACK button – displays the default function buttons again



Touching the CAMERA button brings up the camera options

- You have the option to flip the orientation of the camera's
- Adjust the image quality. When the image quality is changed it affects all the camera's.
- Number of camera's is going to be 4 (maximum number that the camera hub can support)
- You can set up a scan interval that will automatically scan through the camera's at the selected interval.
- SCAN button allows the camera's to automatically scan through the camera's. When the monitor is scanning the next button becomes inaccessible.
- The SCAN button will have a green check in when disabled (touch to enable), there will be an X on the SCAN button when enabled.
- The next button allows you to manually scan camera's when the SCAN button is disabled.