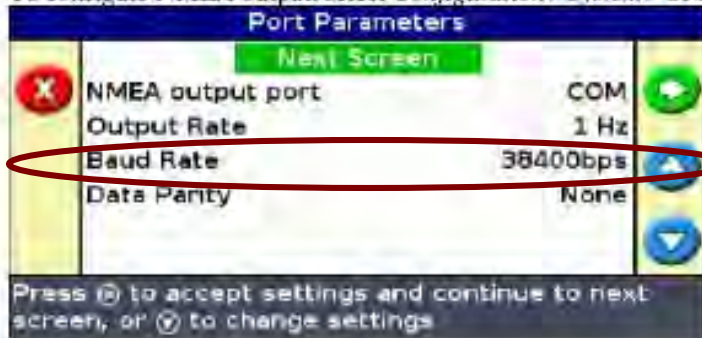


EZ Guide 500 to Topcon X20

- **The following pages detail the procedure to get GPS signal from the Trimble EZ Guide 500 for the Topcon X20.**
- **This will be required for Variable rate control, Guidance, and/or sectional control.**

To configure NMEA output, select *Configuration / System / GPS / NMEA Output*:

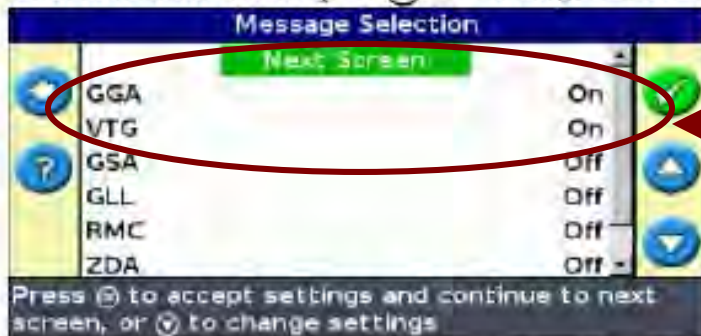


The Trimble output Baud rate should be set to 38400bps

1. Set the *NMEA output port* option to the lightbar port that the NMEA device is connected to.
2. Set the lightbar port parameters.

Tip – To be able to communicate, the parameters must match those of the device.

3. Select Next Screen and then press [OK]. The *Message Selection* screen appears:



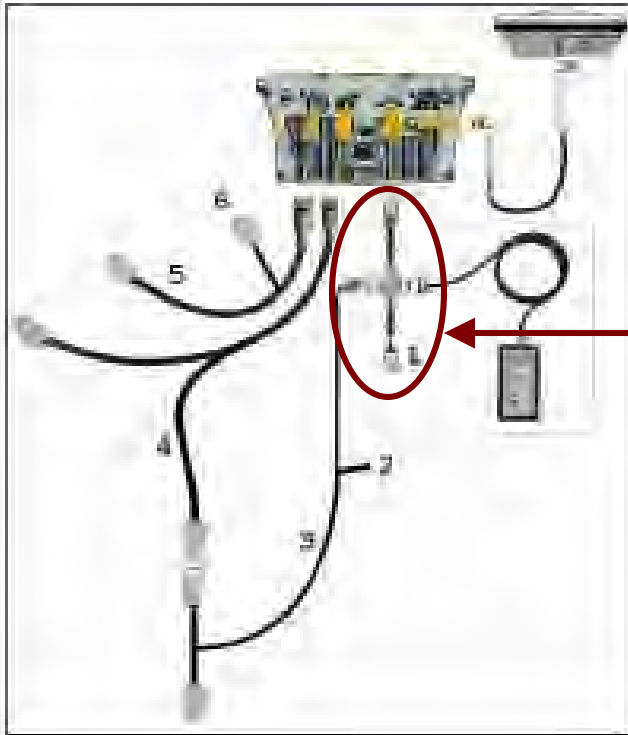
The Trimble GGA and VTG must be turned On

4. Set the various message formats to On or Off, depending on whether they are required.
5. Select Next Screen and then press [OK].
6. If you turned GGA on, then select the number of decimal places in the GGA message.

Note: Some external devices cannot read the GGA message if there are too many decimal places in the string.

Outputting NMEA messages with RTK corrections

If you are using RTK corrections and outputting NMEA, you must connect the NMEA device to the AUX port. Use the port expansion cable (P/N 62609) and the accessory cable (P/N 63076):



A Trimble P/N 62749 should be used as a Y cable to connect to a serial cable going to COM 1 port located in the back of the X20.

*If using the Trimble remote you can add a second 62749 cable.

ITEM	DESCRIPTION
1	External interface cable (P/N 62749)
2	To RTK radio
3	RTK radio cable
4	EZ-Guide 500 power cable (P/N 62817)
5	Port expansion cable (P/N 62609)
6	Connect COM 2 port connection cable (P/N 63076) and then NMEA device

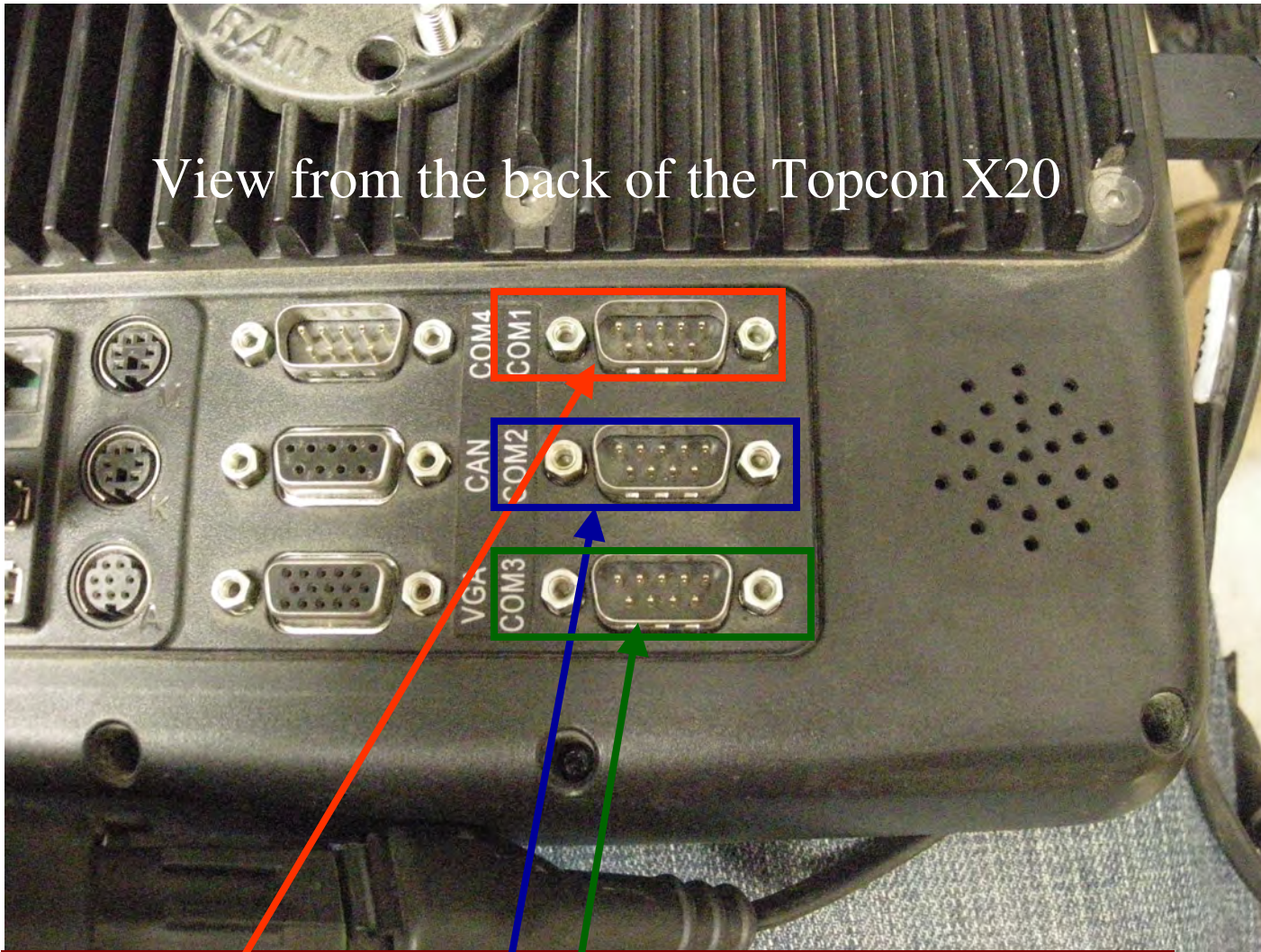
External Receiver Support

The EZ-Guide 500 lightbar can receive GPS positions from TSIP-compatible receivers. This enables you to use any of the correction types available on your receiver, including OmniSTAR, Beacon, and RTK.

The following TSIP-compatible receivers are supported by the EZ-Guide 500 lightbar:

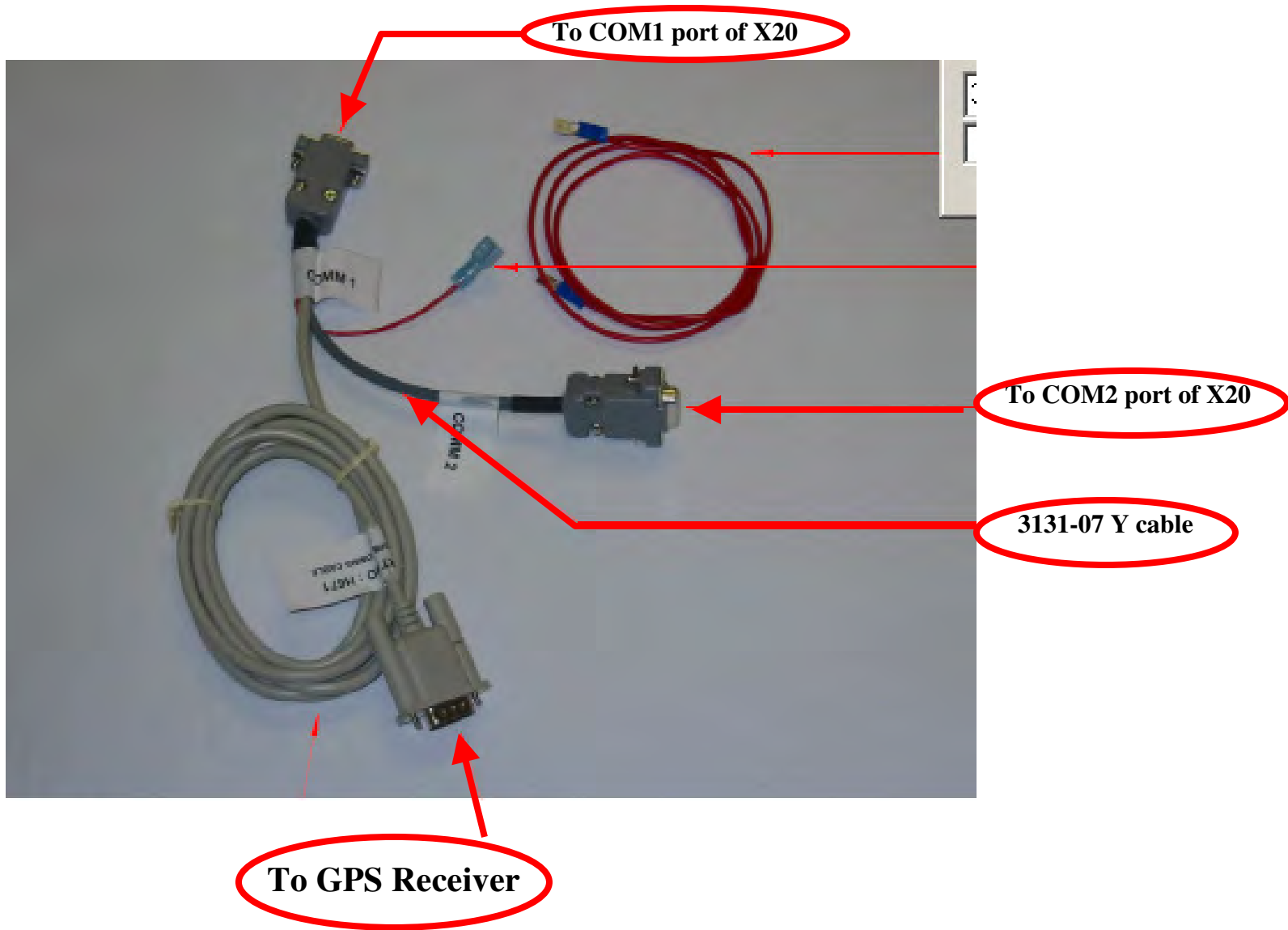
Trimble	Case IH	Ag Leader	New Holland
AgGPS 252	AFS 252	GPS 5100	NH 252
AgGPS 332	-	-	-

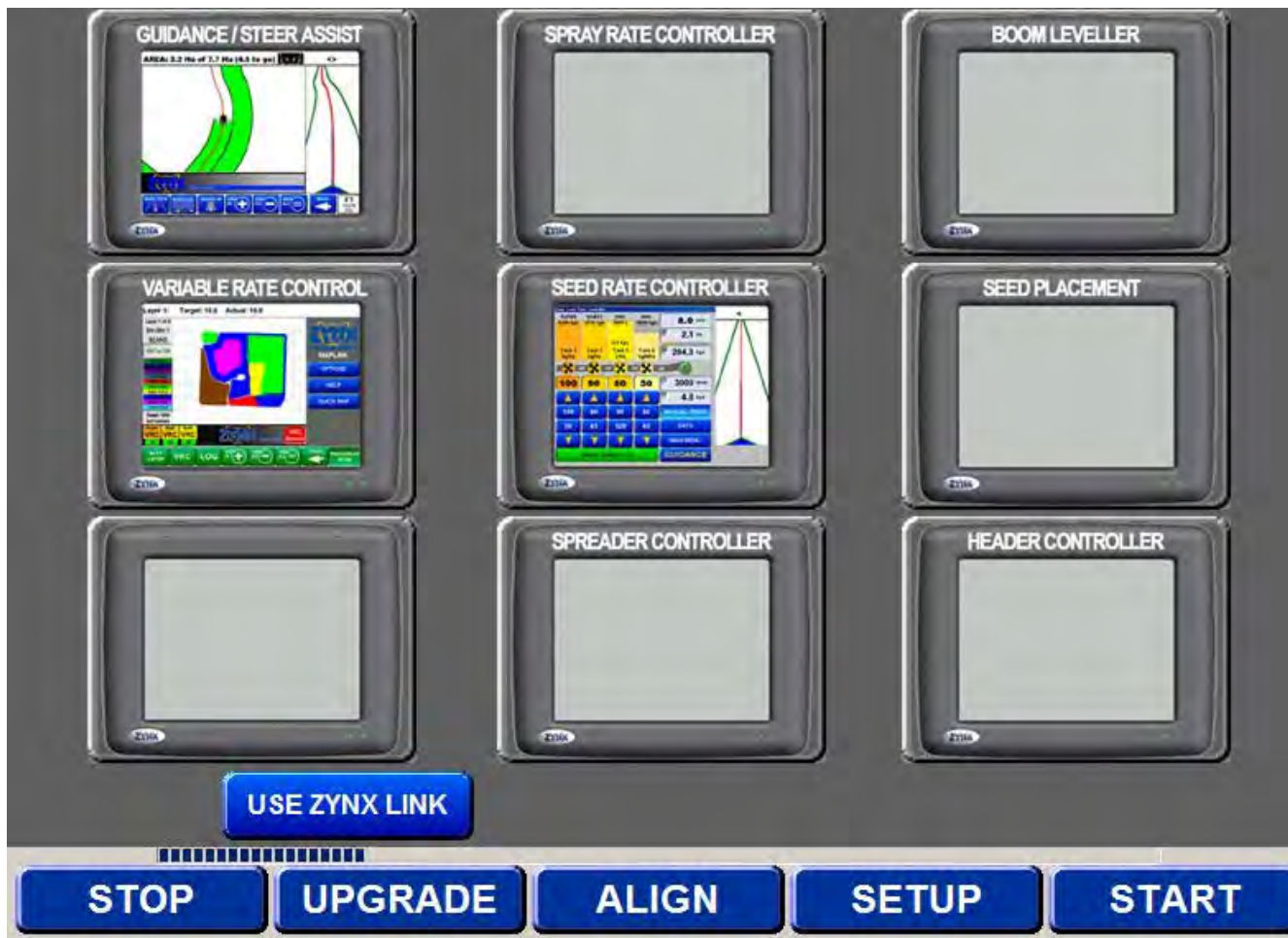
View from the back of the Topcon X20



All serial cables must be connected to specific COM ports.

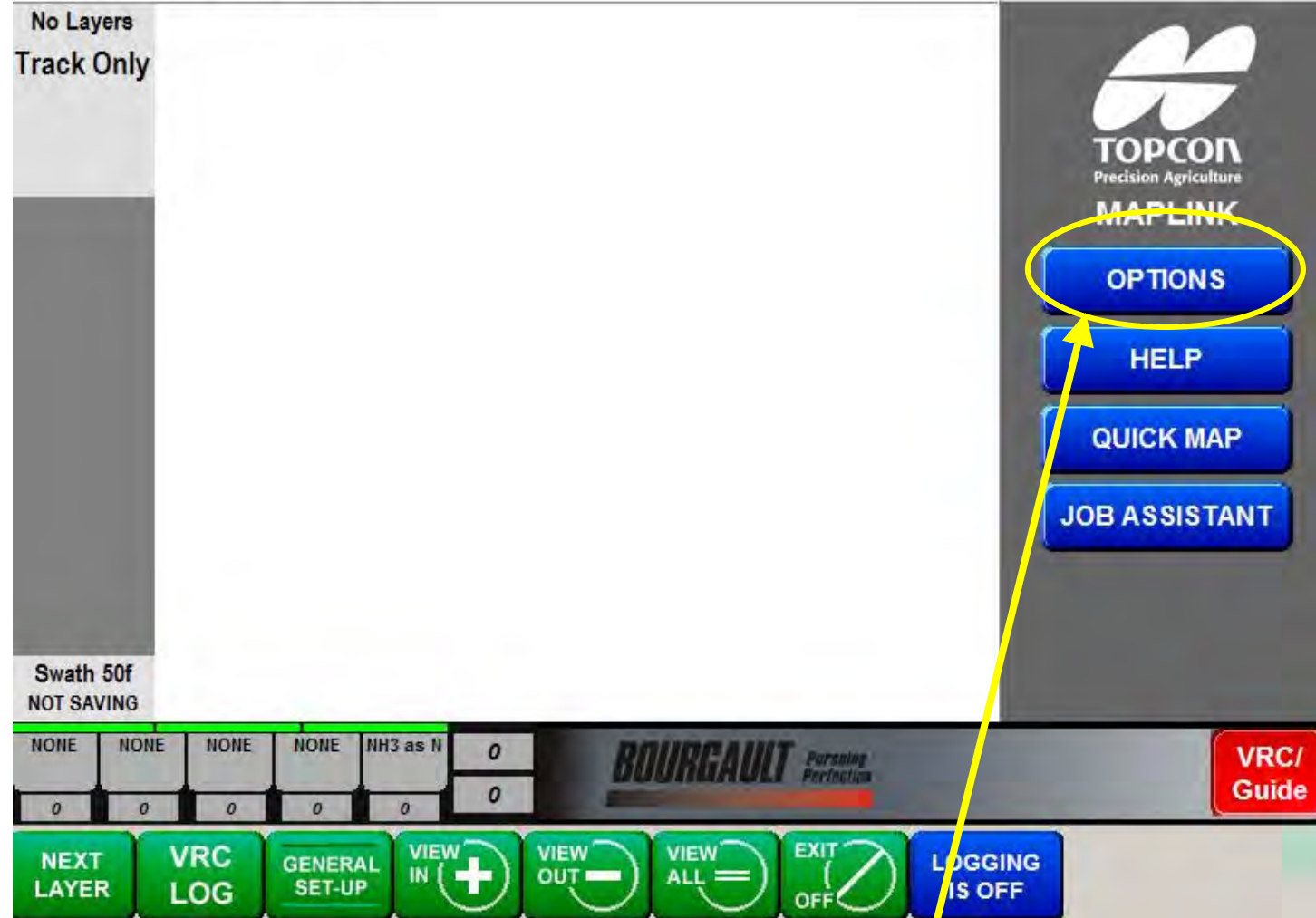
- **Guidance to COM1 (To serial port on Trimble)**
- **Variable Rate Control to COM2 (To serial port on Trimble)**
- **Seed Rate Control to COM3 (To SRC interface box)**



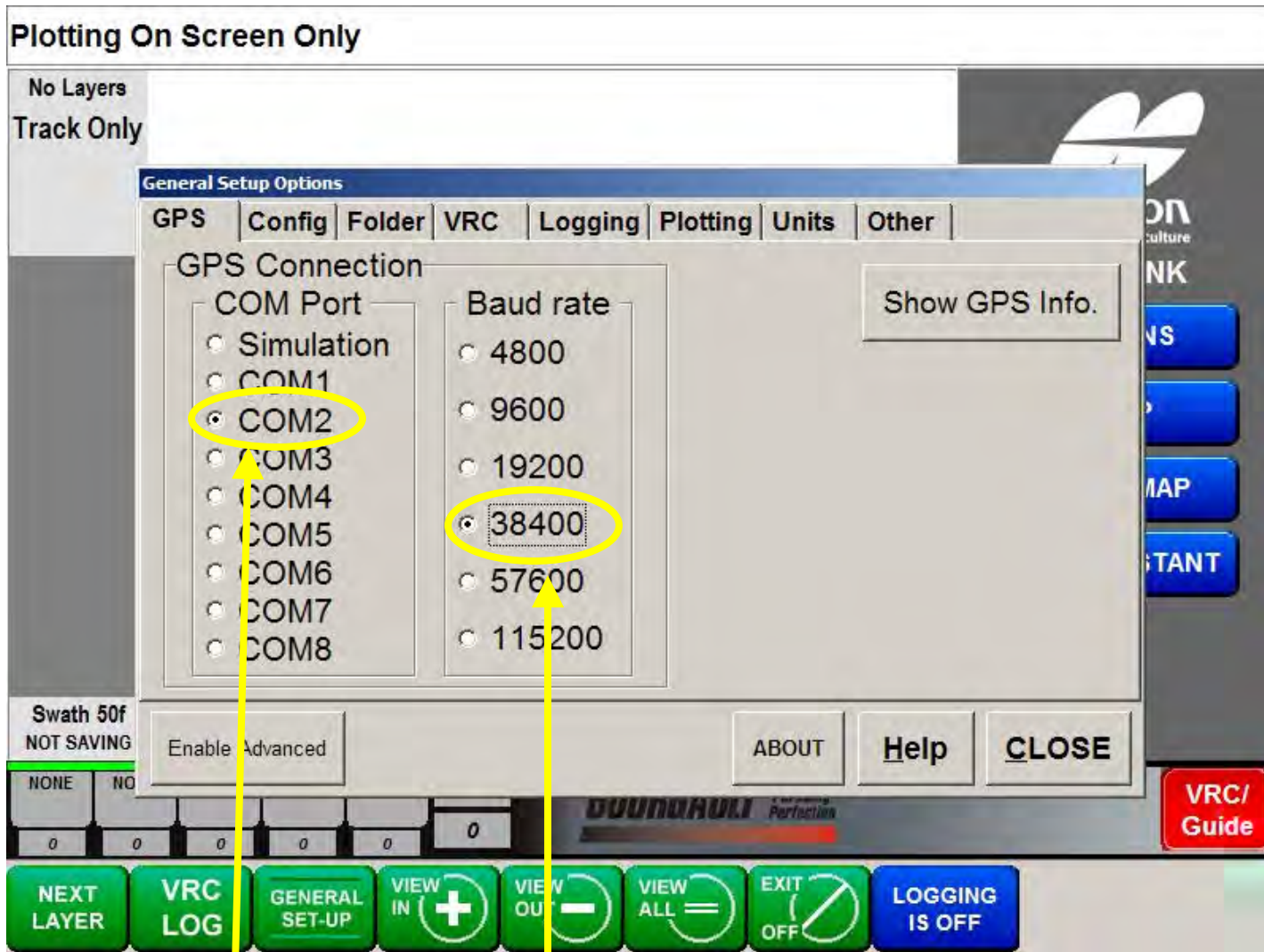


Power up the X20 and select Guidance/Steer Assist, Variable Rate Control and Seed Rate Control.

Plotting On Screen Only



Select the Options tab in the Maplink program.



Select COM2 for Maplink

Select 38400 for the Baud rate

Plotting On Screen Only

No Layers
Track Only

Swath 50f
NOT SAVING

TOPCON
Precision Agriculture
MAPLINK

OPTIONS
HELP
QUICK MAP
JOB ASSISTANT

NONE	NONE	NONE	NONE	NH3 as N	0
0	0	0	0	0	0

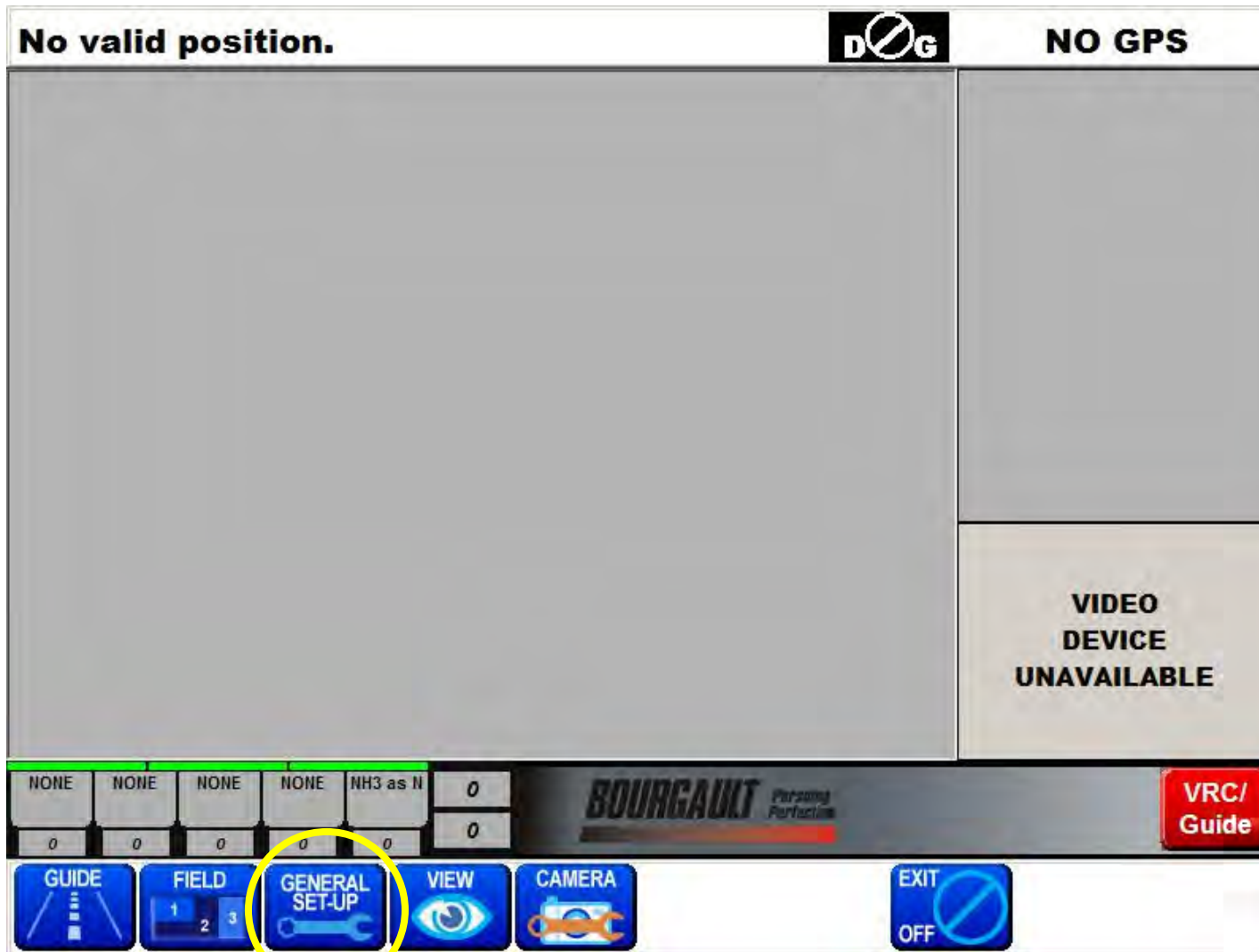
BOURGAULT Pursuing Perfection

VRC/
Guide

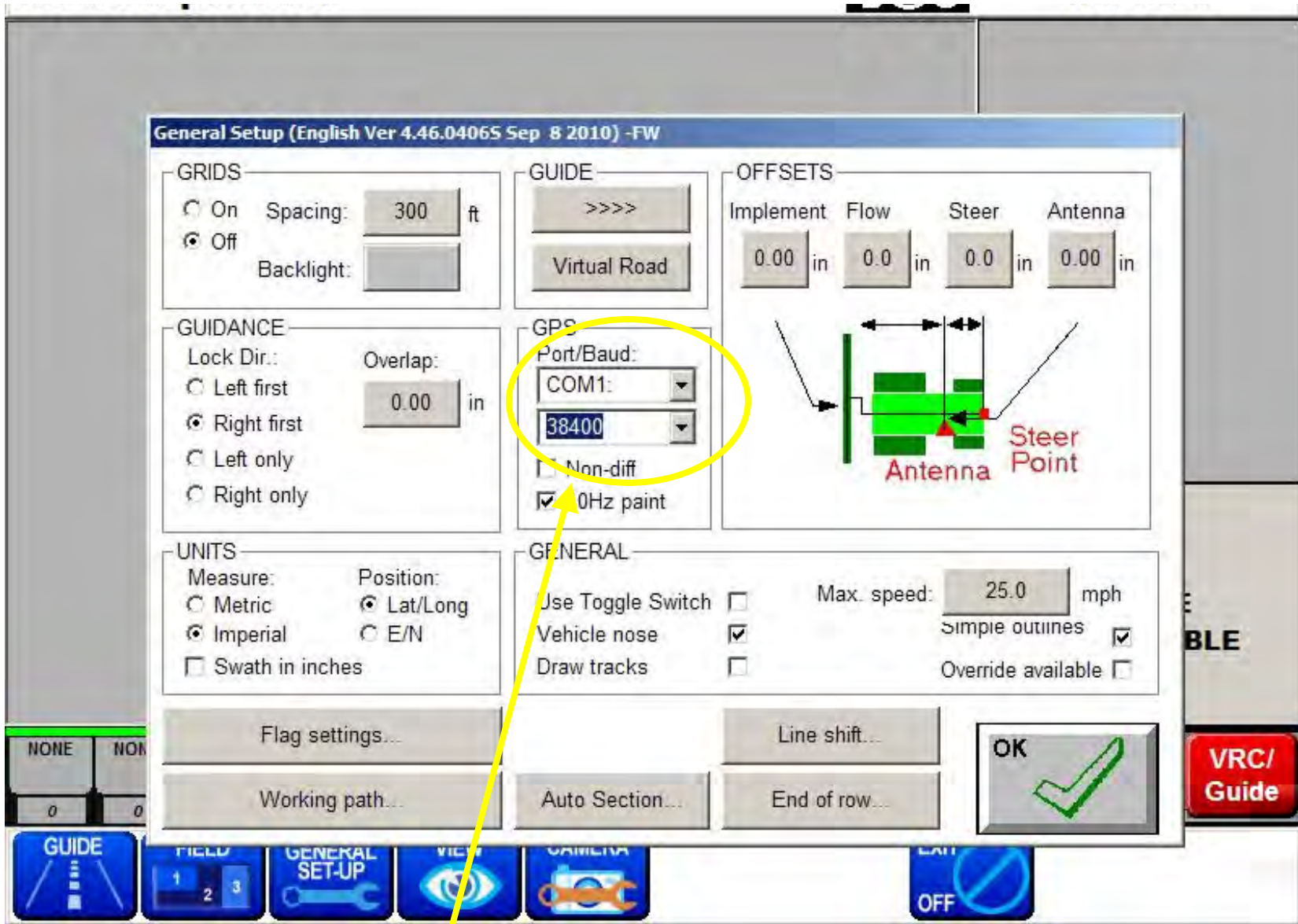
NEXT LAYER VRC LOG GENERAL SET-UP VIEW IN + VIEW OUT - VIEW ALL = EXIT OFF LOGGING IS OFF



Press the **VRC/ Guide** tab top cycle to the Guidance program.



Press the General Set-up tab



Select COM1 and 38400 as the Baud rate for Guidance

Plotting On Screen Only

No Layers
Track Only



TOPCON
Precision Agriculture

MAPLINK

OPTIONS

HELP

QUICK MAP

JOB ASSISTANT

Swath 50f
NOT SAVING

NONE	NONE	NONE	NONE	NH3 as N	0
0	0	0	0	0	0

BOURGAULT Pursuing Perfection

VRC/
Guide

NEXT
LAYER

VRC
LOG

GENERAL
SET-UP

VIEW
IN +

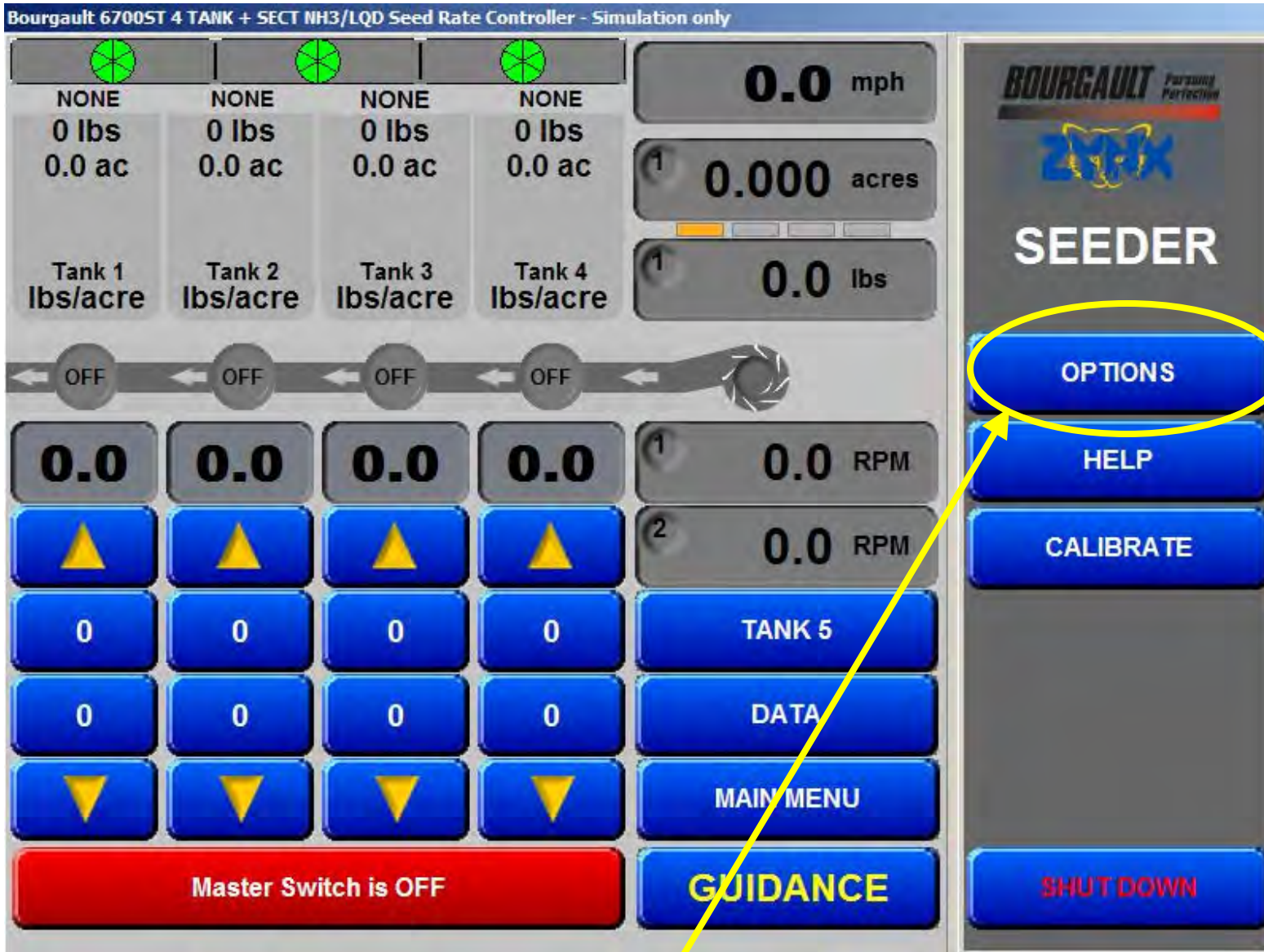
VIEW
OUT -

VIEW
ALL =

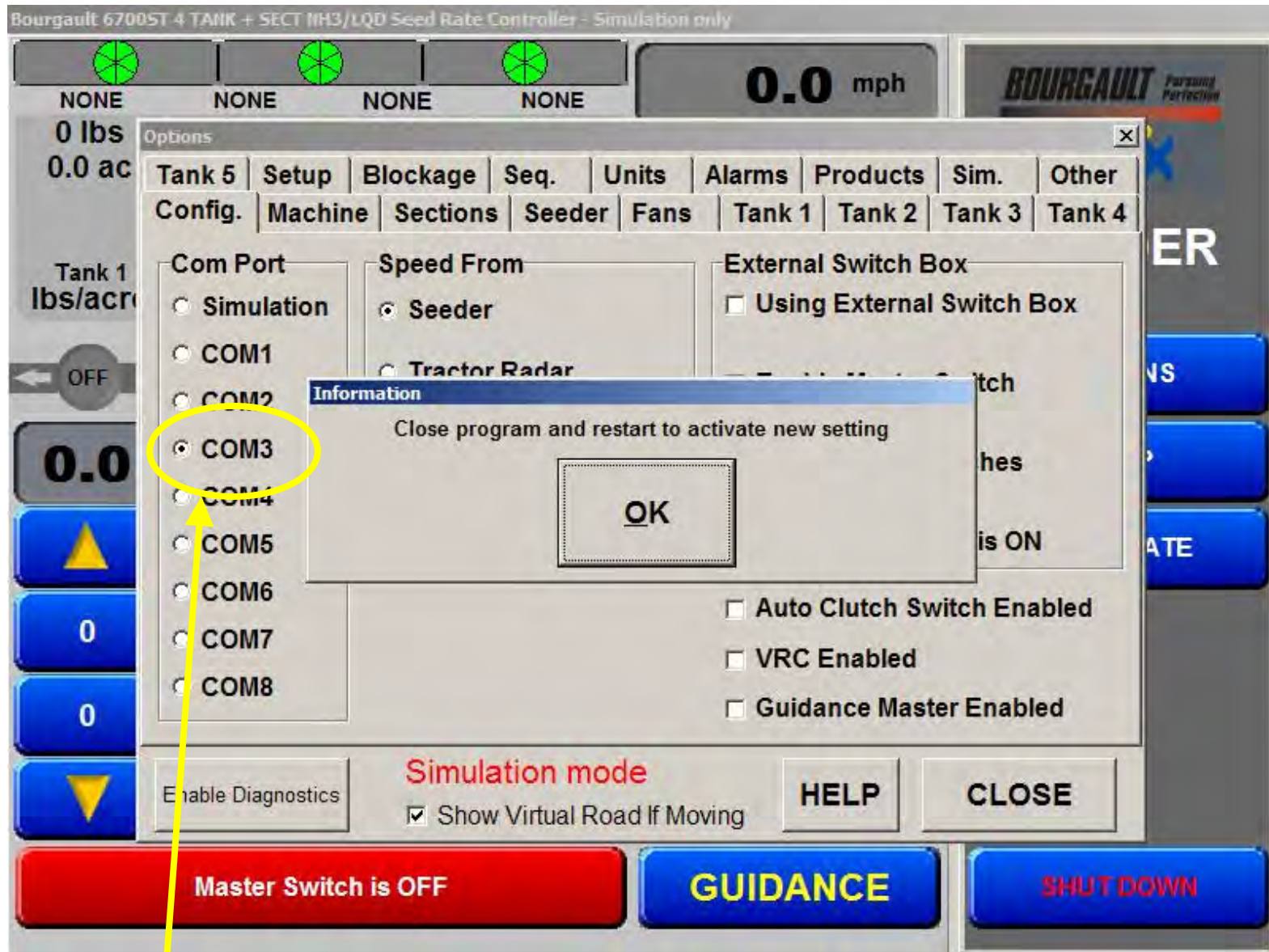
EXIT
OFF

LOGGING
IS OFF

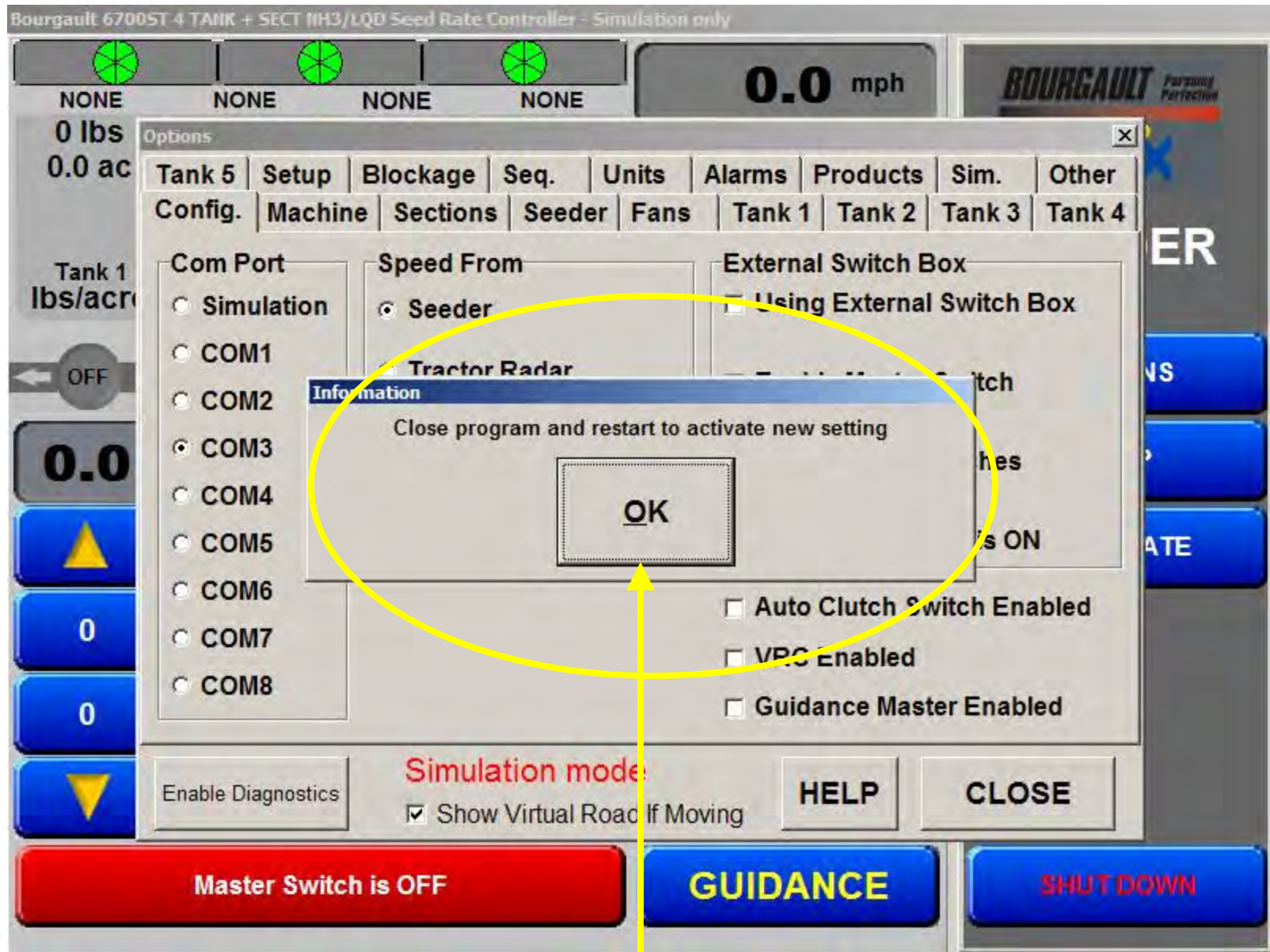
**Touch this area to access the Seed Rate
Controller program**



Touch the Options tab of the Seeder program



Select COM3 for the Seed Rate Controller



The X20 programs must be closed and restarted to retain the COM settings