

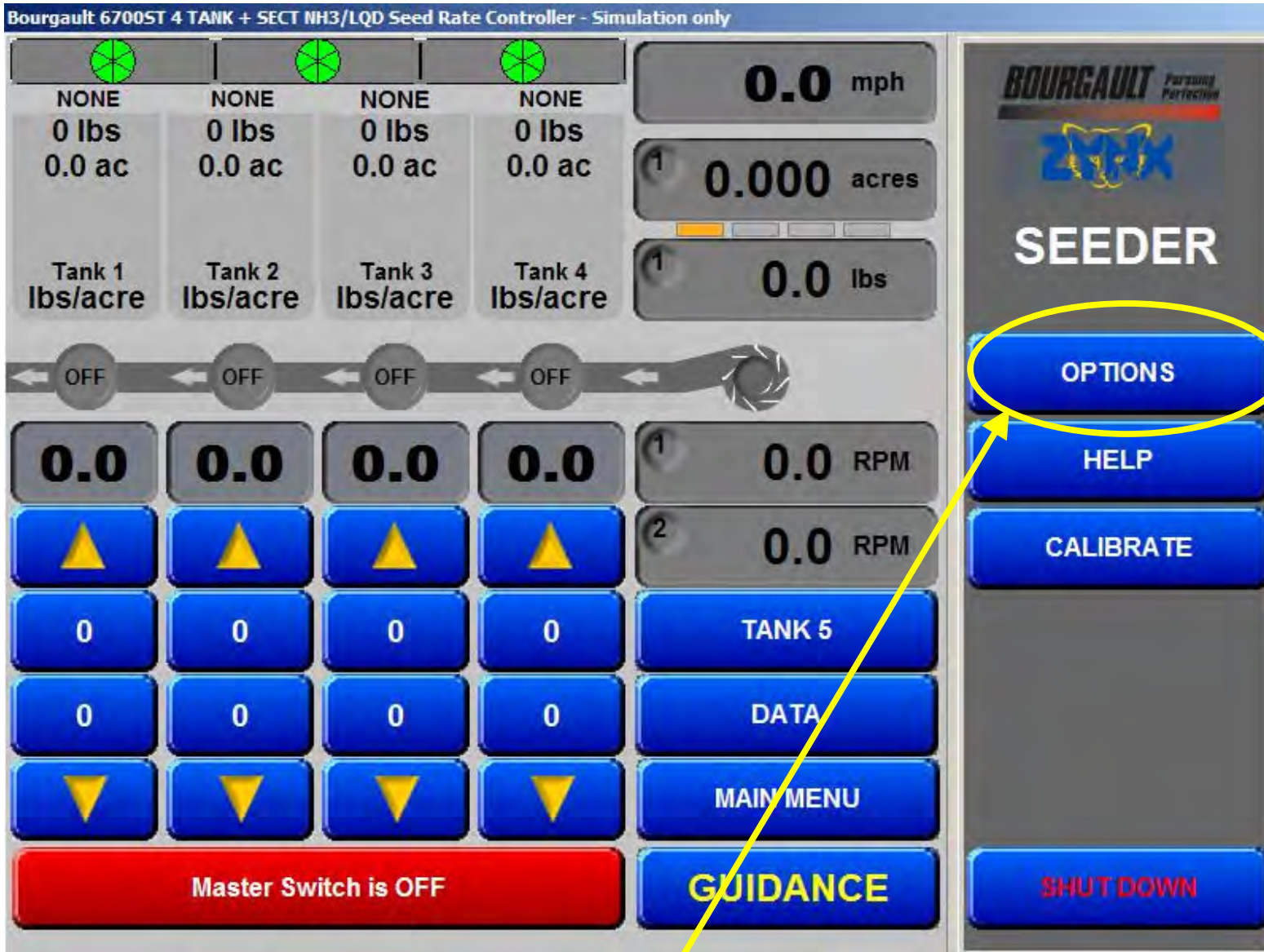
Section controlled NH3 or Liquid

- **The following pages detail the steps that need to be followed to run section control for NH3 or Liquid fertilizer.**
- **Your Bourgault Air Seeder needs a Topcon X20 system with version 2.3.7.1 or newer and must be equipped with a 30S ECU to run section control.**
- **The Topcon Guidance program must be running along with the Seed Rate Controller program.**

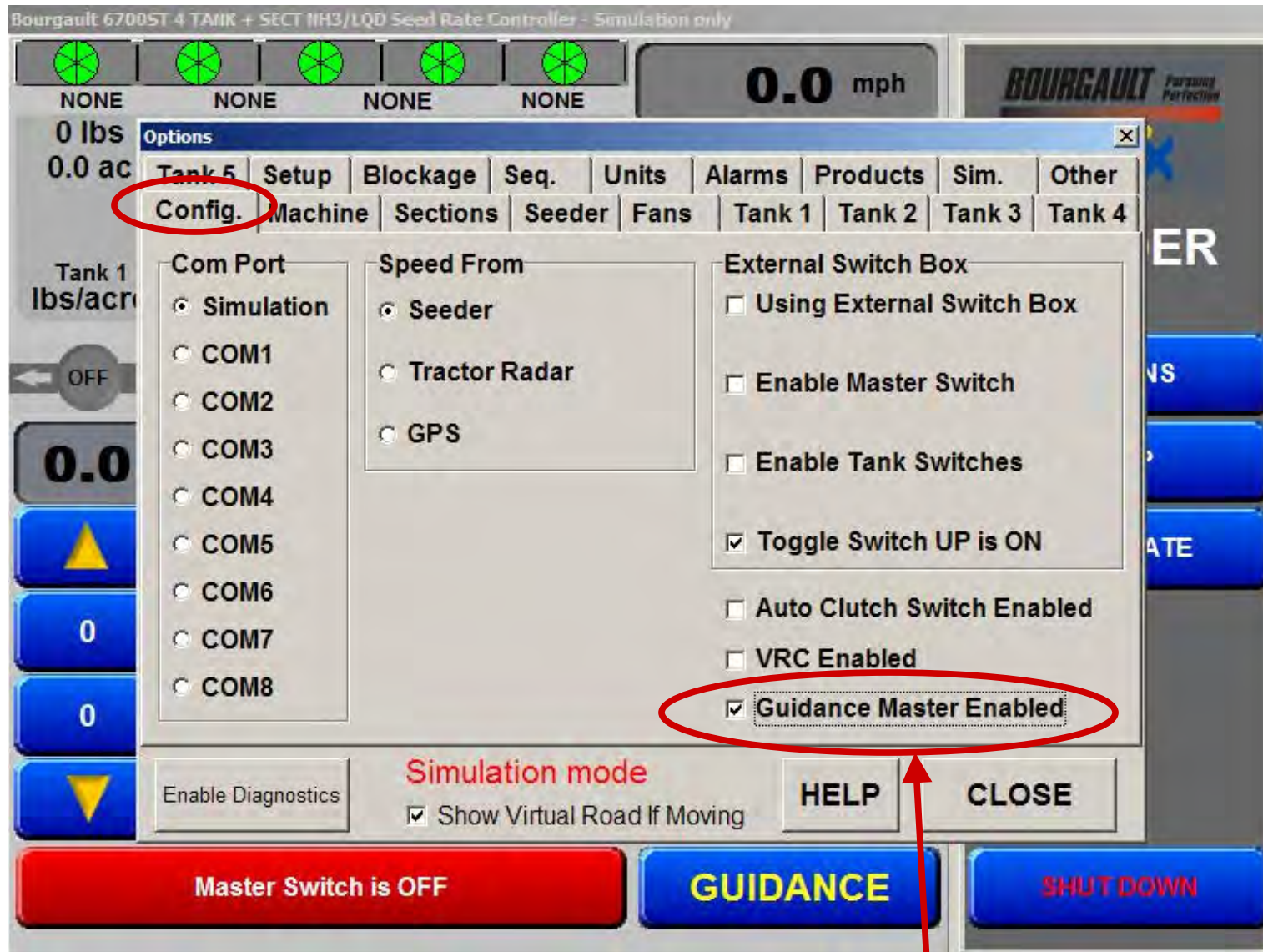


Select both of the above programs

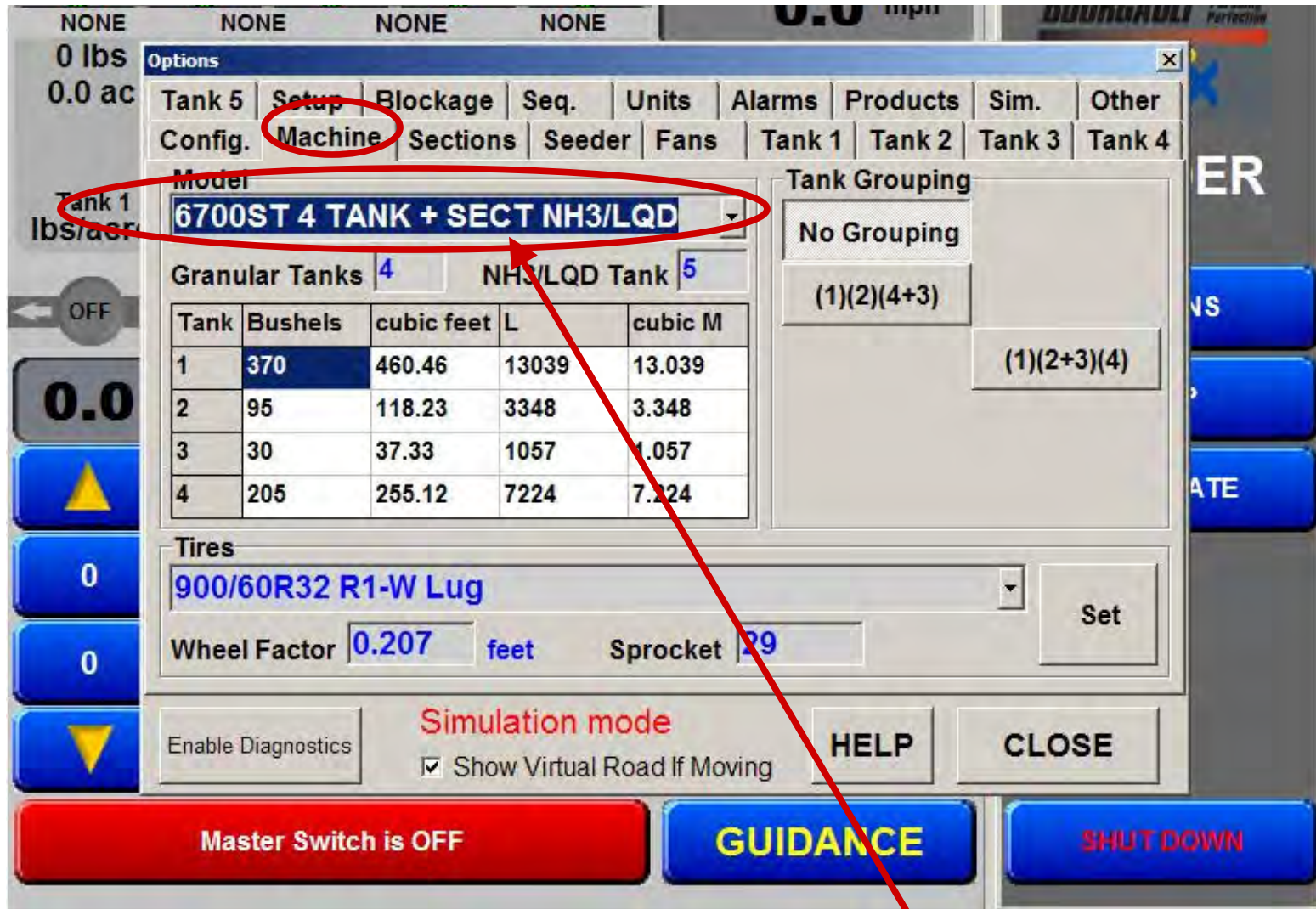
If variable rating you need to run the variable rate control program as well.



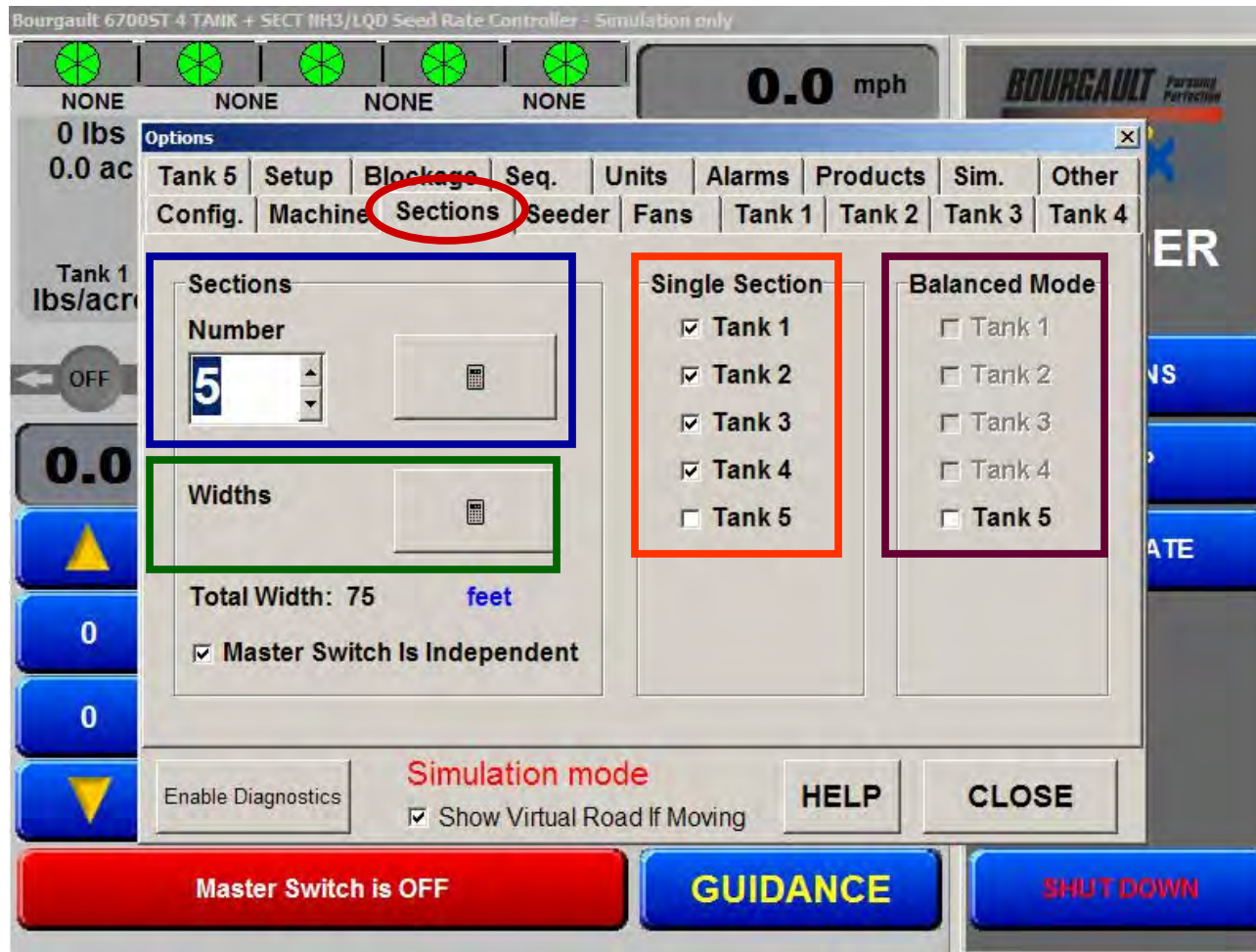
Touch the Options tab of the Seeder program



To run sectional control the **Guidance Master Enabled** must be selected

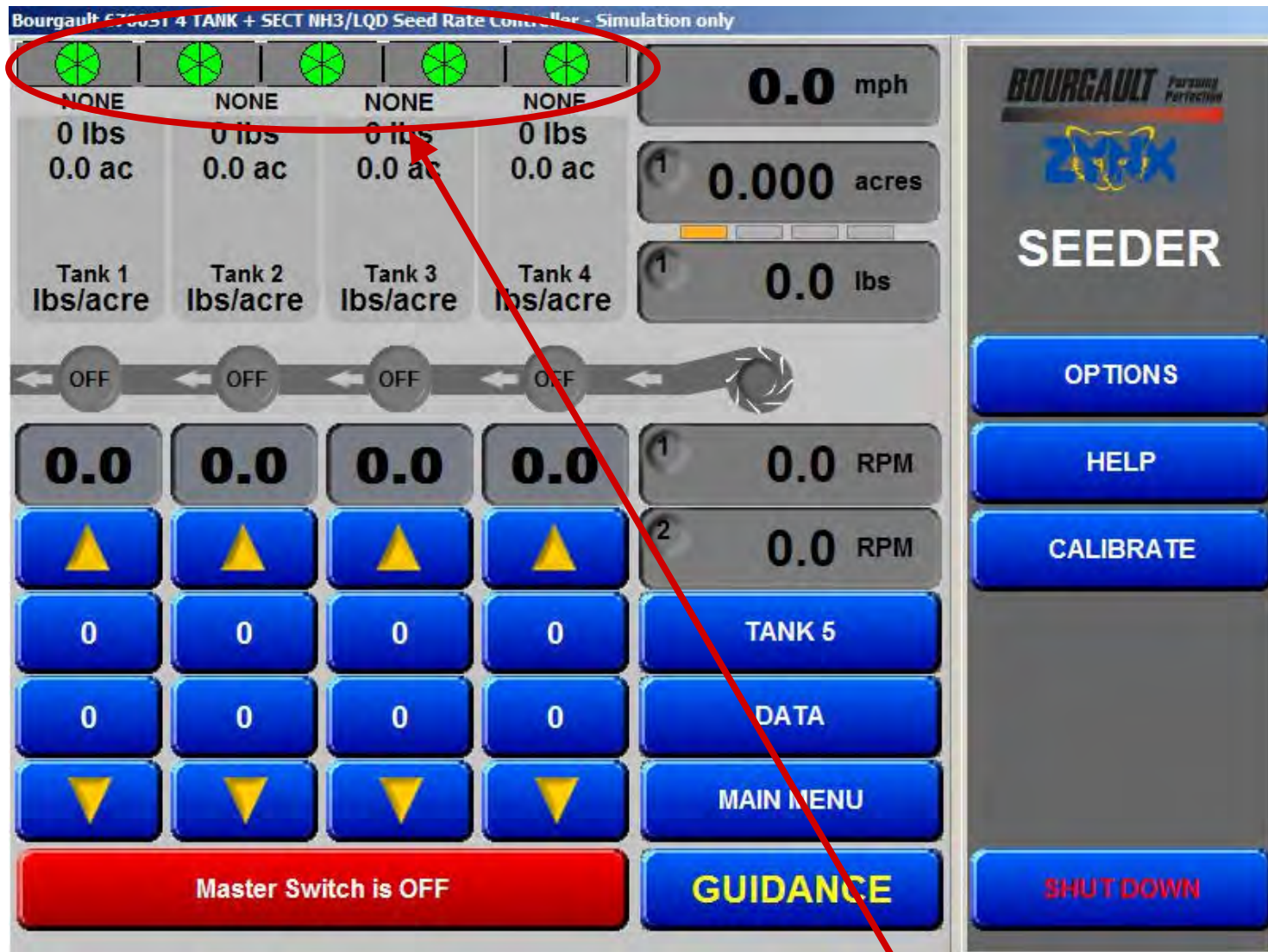


Under the Machine Tab you must select your model + Sect NH3/LGD to enable the sectional control

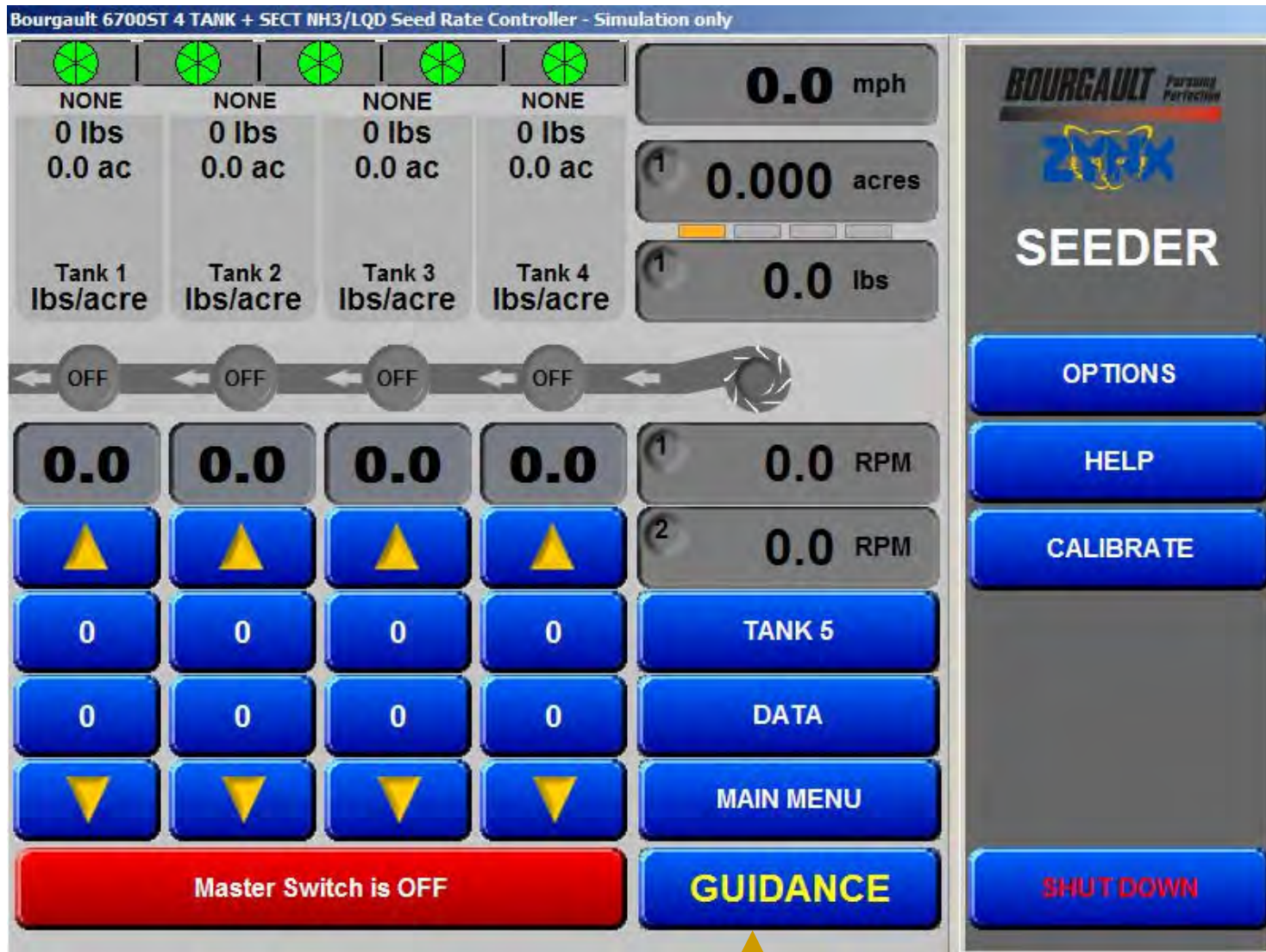


Under the **Sections** tabs you must make the following selections;

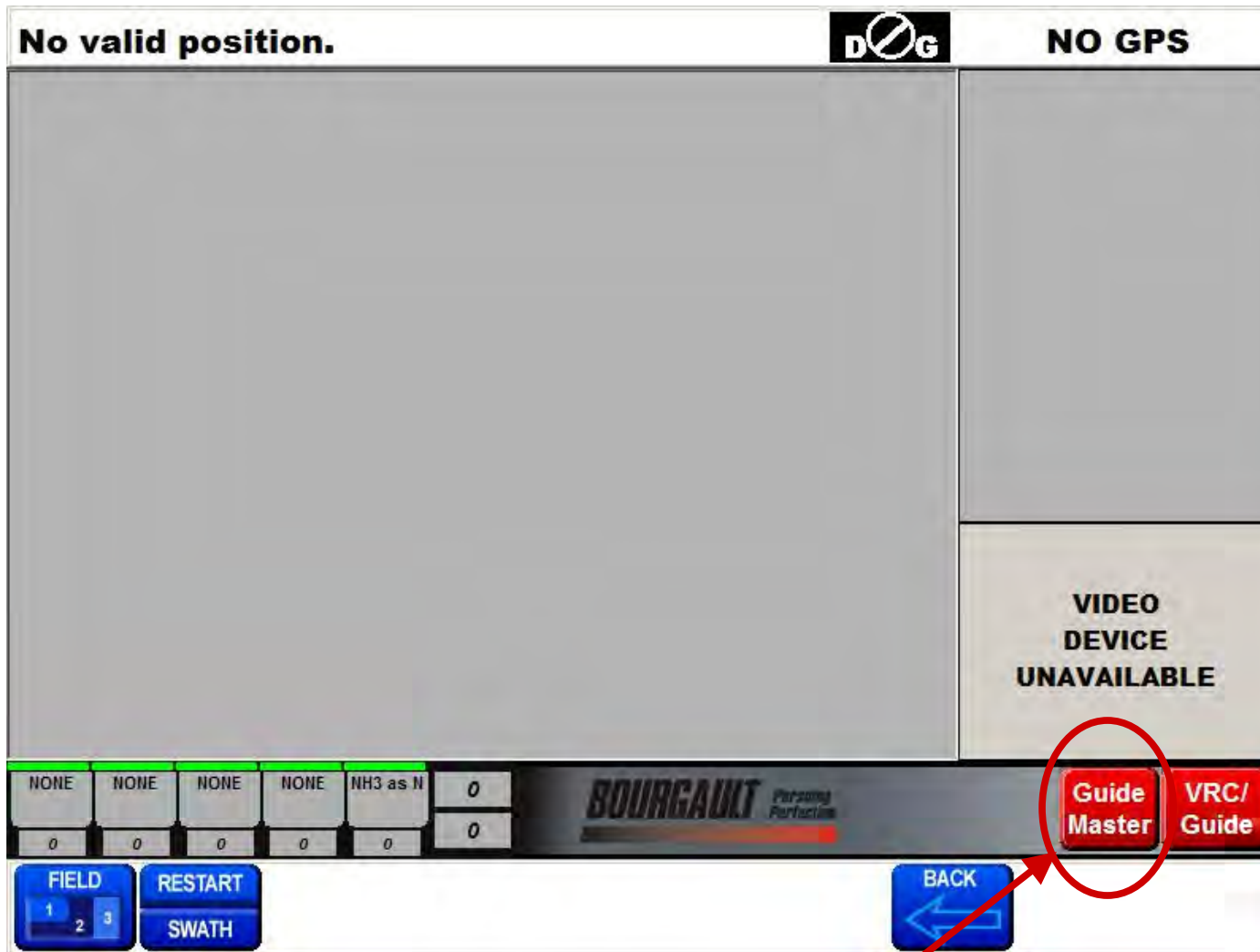
- **Sections Number**
- **Widths**
- **Single Section** checked for all granular tanks and blank for the NH3/Liquid tank
- **Balanced Mode** left blank



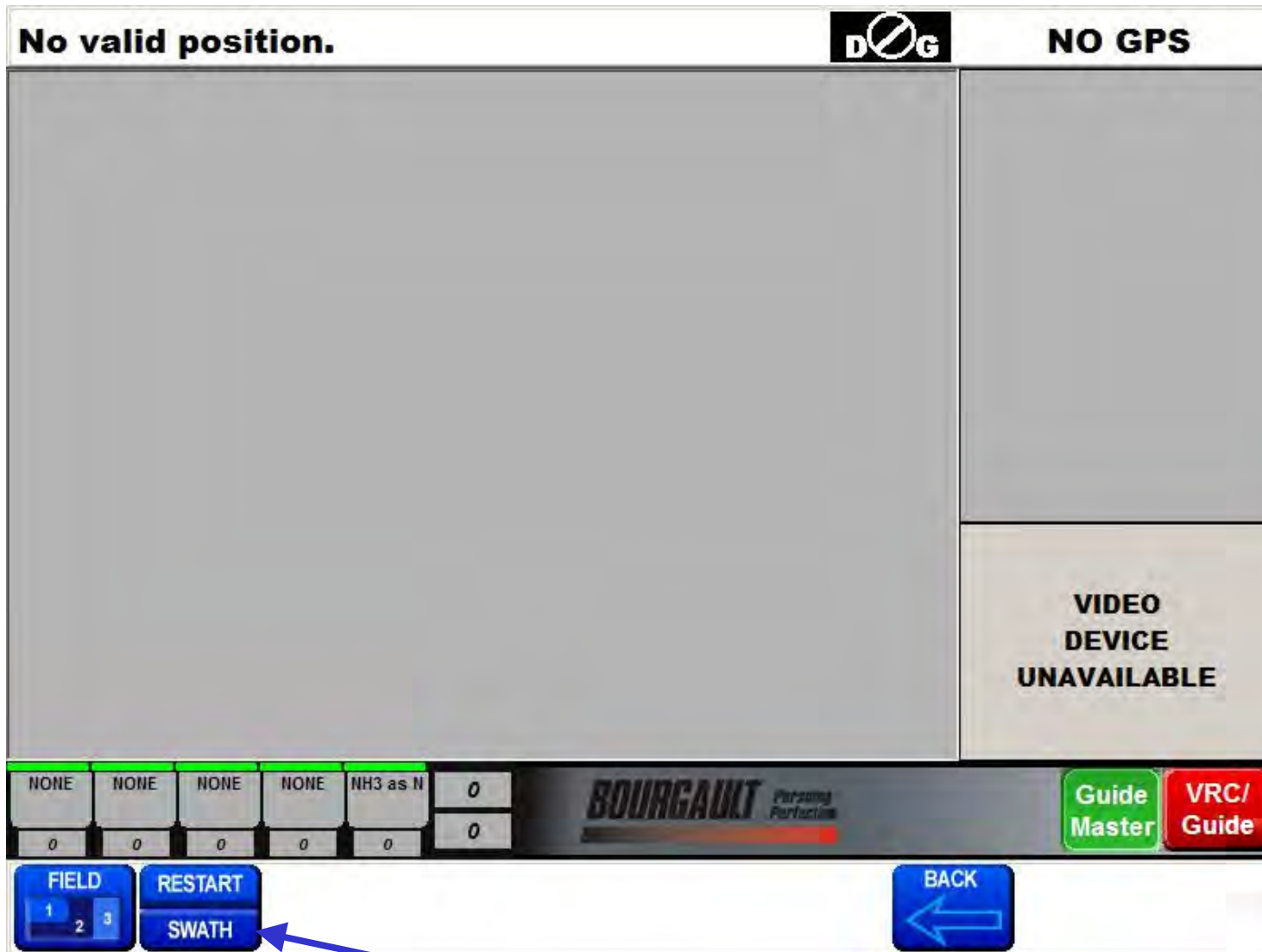
After the sectional control is set up there will be indicators matching the number of sections and if they are on or not (**green** indicates on)



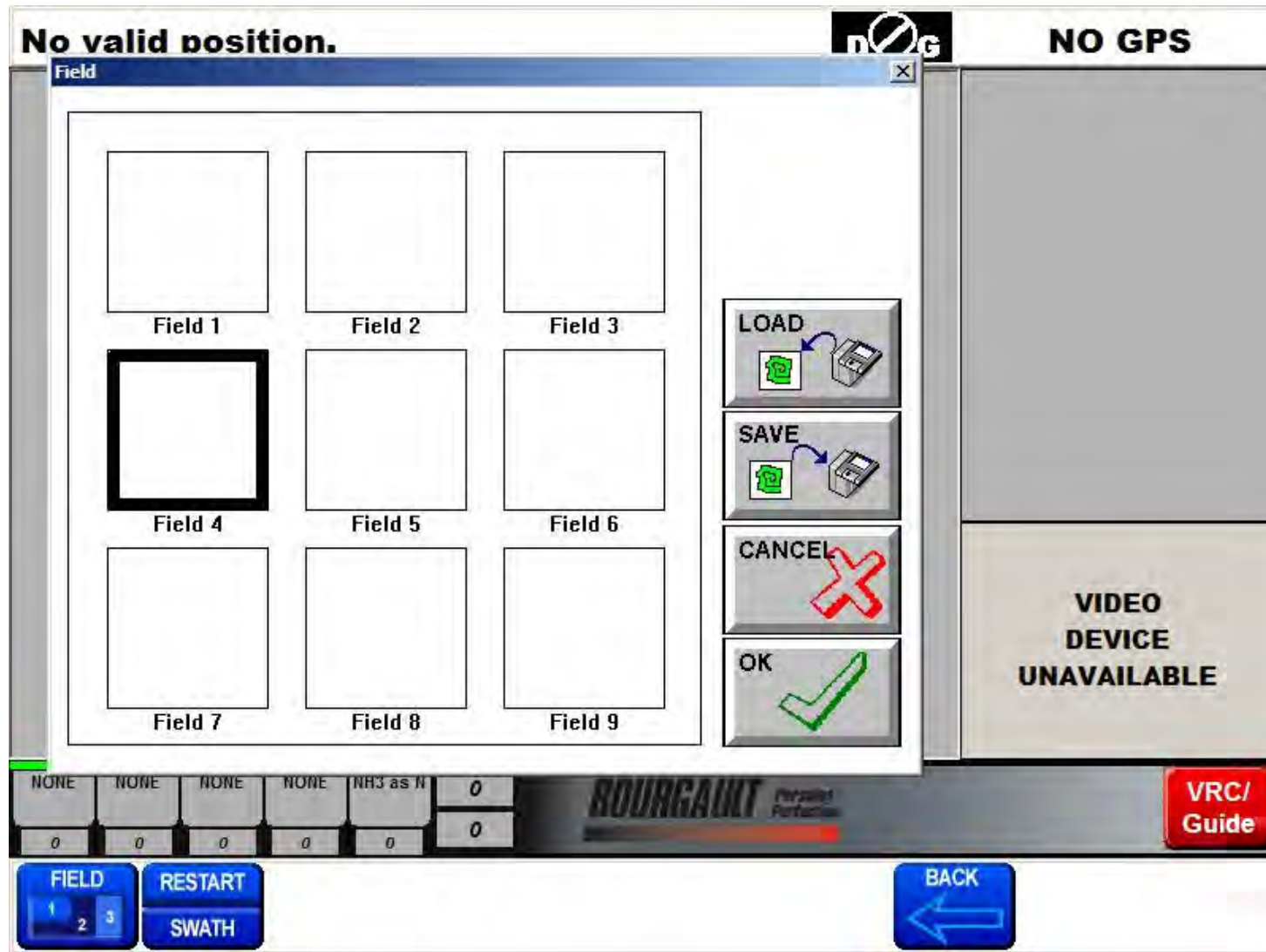
Touch the **GUIDANCE** tab



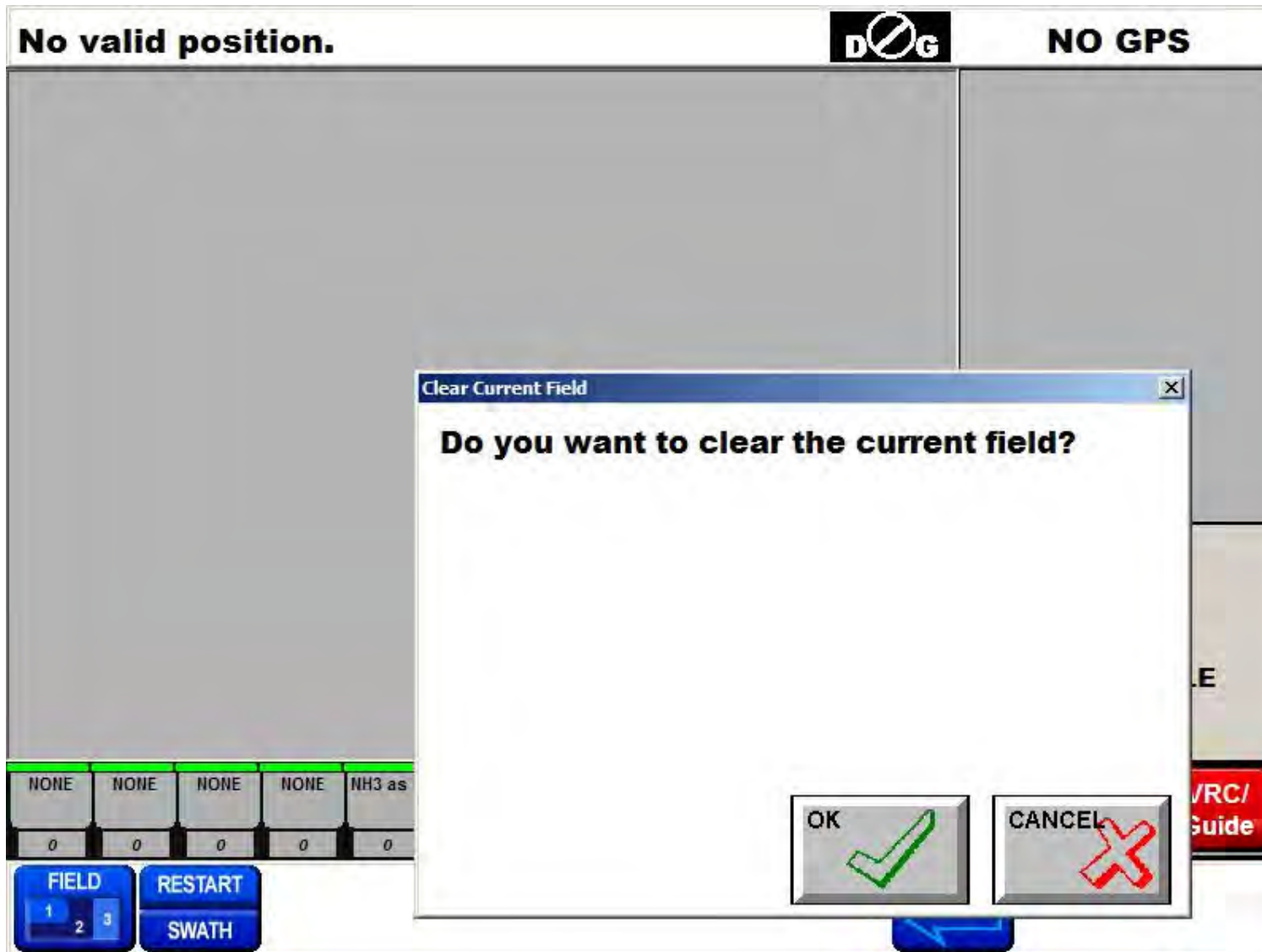
When the Guide Master is enabled in the Seeder program you will have a Guide Master button that is **Red** when off and **Green** when on



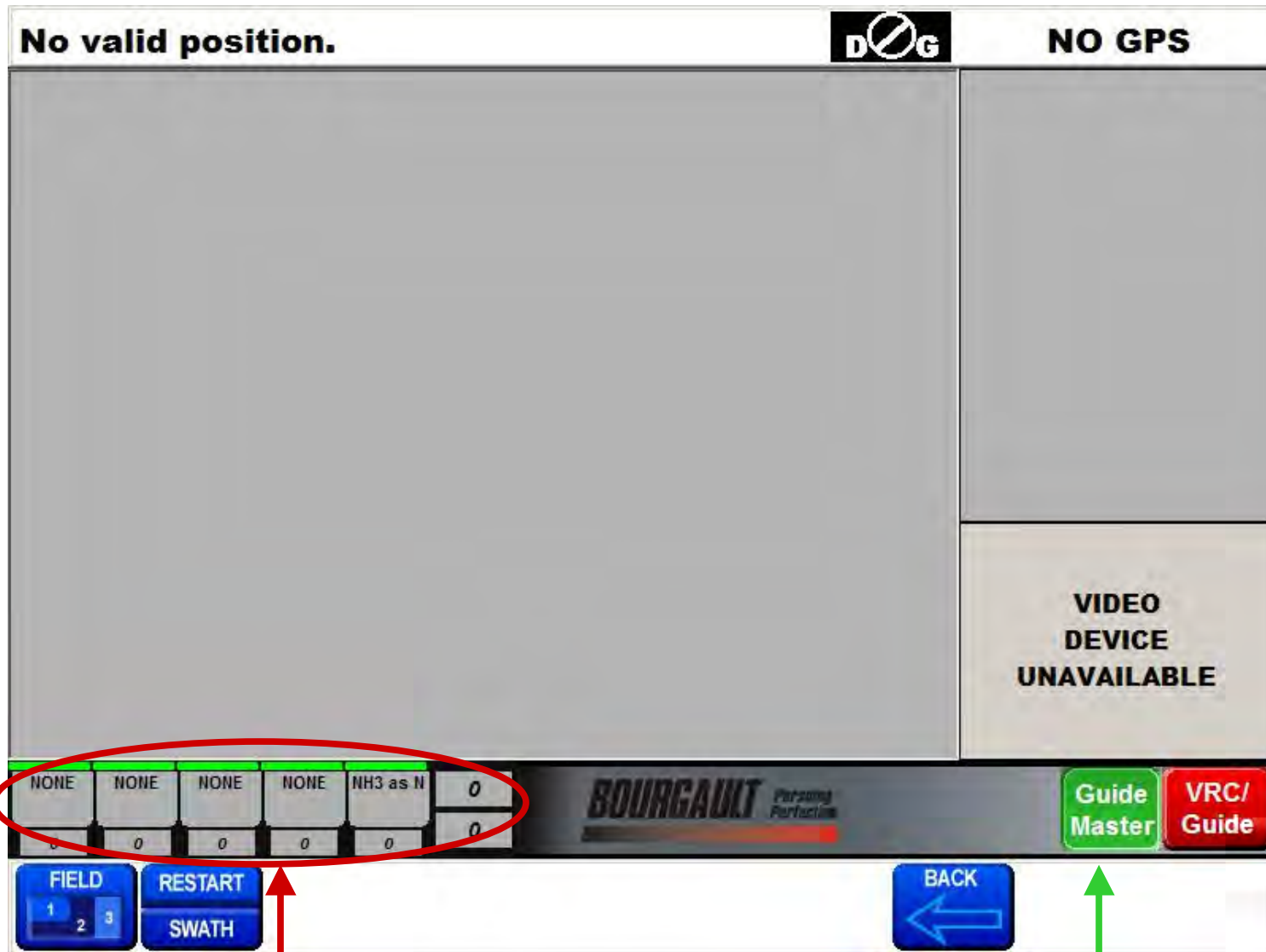
To make the sectional control work you must first select a new field by touching the **FIELD** tab or use the current field by touching the **RESTART SWATH** tab



If you have previously touched the **FIELD** tab to start a new field a screen will come up where one of 9 fields must be selected

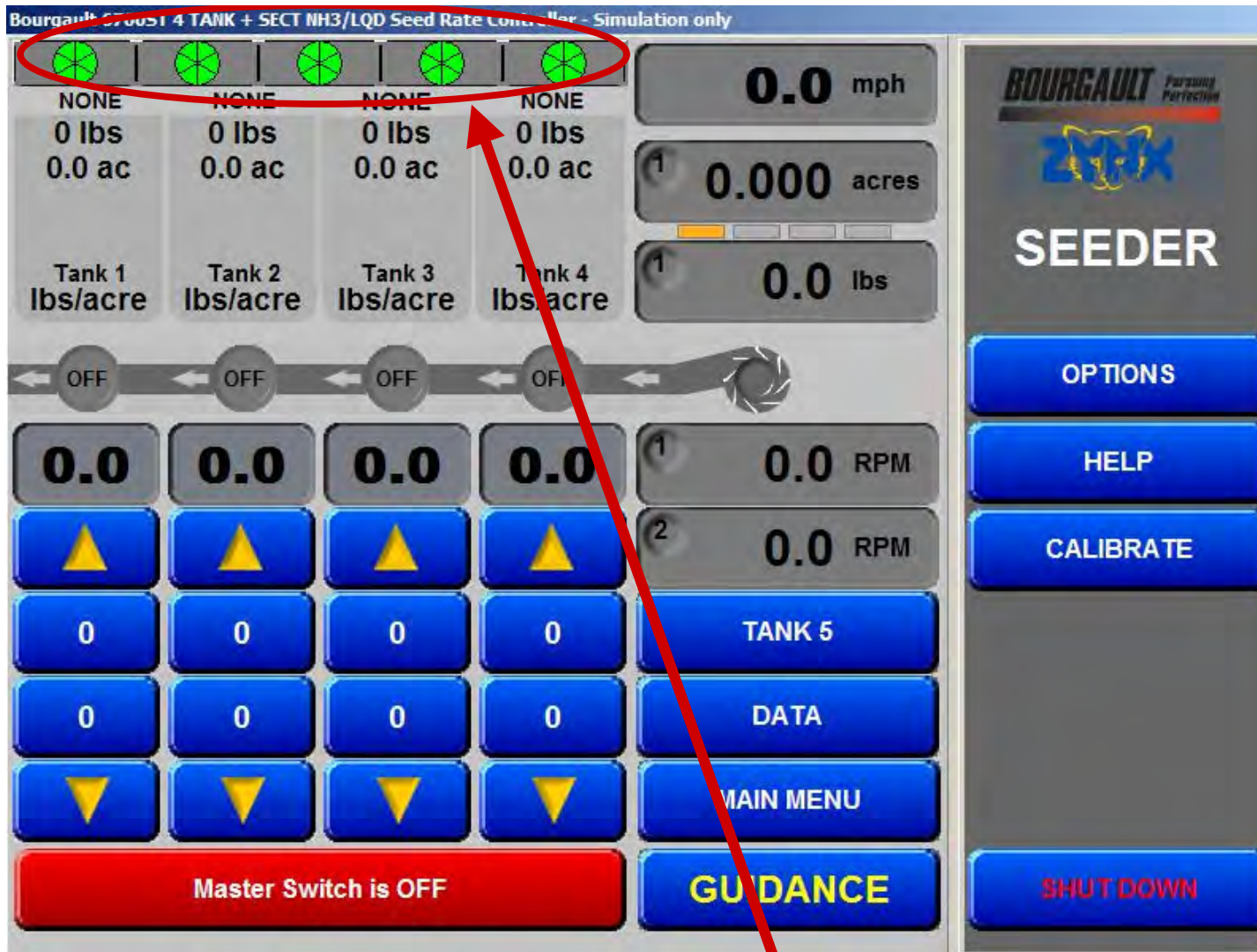


If you have previously chosen to over write the current field by touching the **RESTART SWATH** tab a screen will pop up asking you to clear the current field.



Press in this area to switch to the seeder operation screen

After a new field has be selected make sure the **Guide Master** tab is green



You are now ready to go! Watch for the green indicators to turn off as you cross into previously seeded fields.