

Bourgault

7000 Series Air Seeder

Digi-Star Scale Setup Procedure



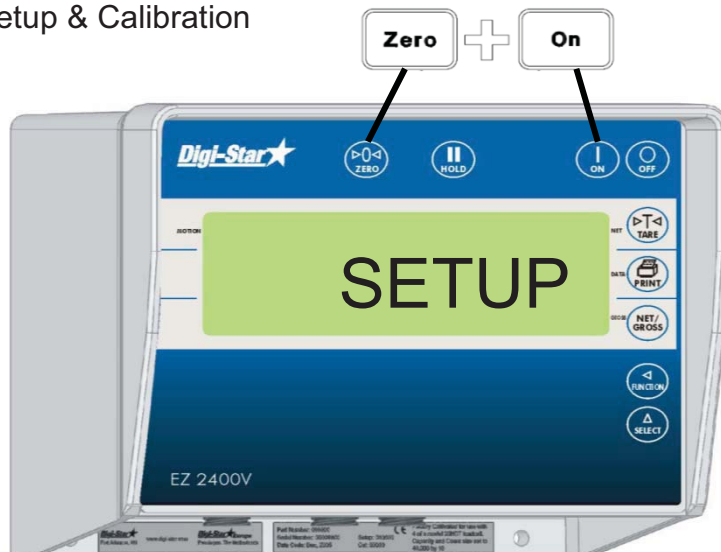
Note: This procedure is done at the plant prior at the final stage of assembly. The setup should only be required if a replacement module is installed.

WEIGH SYSTEM FINAL ASSEMBLY TEST

- 1) Ensure power cable from Digi-Star monitor is connected to X20 MDECU (port 5)
- 2) Power on the X20 monitor
- 3) Power on the Digi-Star monitor

Confirm SETUP# and CAL#:

- 4) Press and hold the [ZERO] key, then press the [ON] key for 3 seconds, to enter Short Form Setup & Calibration



- 5) The display will flash "SETUP" and then display the 6-digit setup number with the right digit flashing.

- 6) Below are the correct SETUP# for each unit:

7700/7950: **147110**

L7800: **147090**



- 7) If the SETUP# is not correct, adjust the number as follows. Press [NET/GROSS] several times to increment the digit to its proper value. Press [TARE] to advance the blinking digit to the left. Repeat for each digit required.

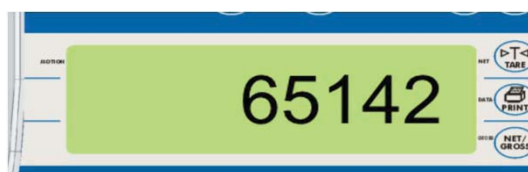
- 8) Once the correct SETUP# is confirmed press [ON] to save the SETUP# and advance to the CAL#

- 9) The display will flash "CAL" and then display the calibration number with the right digit flashing.

- 10) Below are the correct CAL# for each unit:

7700/7950: **65142**

L7800: **46584**

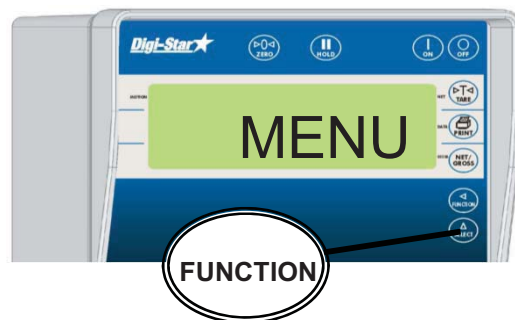
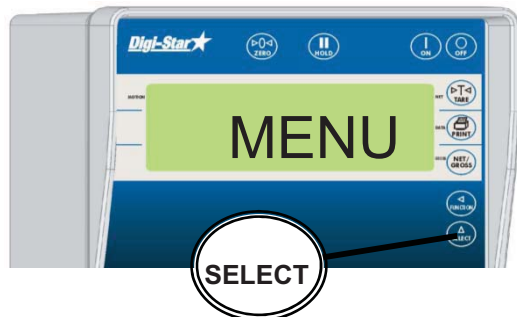


WEIGH SYSTEM FINAL ASSEMBLY TEST

- 11) If the CAL# is not correct, adjust the number as follows. Press [NET/GROSS] several times to increment the digit to it's proper value.
Press [TARE] to advance the blinking digit to the left. Repeat for each digit required.
- 12) Press [ON] to enter the calibration number and the display will go back to normal.

Confirm Baud Rate set to 9600 :

- 13) Repeatedly press [SELECT] until "MENU" is displayed.
- 14) Press and hold [FUNCTION] to enter menu mode.



- 15) Repeatedly press [SELECT] until "MENU 2" is displayed.



- 16) Press [ON] displays setting name and allows value changes, the first setting that will be displayed in MENU 2 is "TIME FORMAT".

- 17) Press [ON] Key repeatedly until the setting "SCOREM" is displayed.

Note: the display will then flash to display "0".

- 18) Press the [SELECT] key until "11" is shown, then press the [ON] key to accept and continue going through the options until "COM IN" is displayed.

- 19) Press [NET/GROSS] repeatedly until "EZ2CMND" is selected.



WEIGH SYSTEM FINAL ASSEMBLY TEST

- 20) Press [ON] to save setting.
- 21) Repeatedly press [ON] until "ZEROUT" is displayed.
- 22) Press the zero button: The screen will display "ZERO".
- 23) Repeatedly press [ON] until exited from the menu screen.
- 24) Power on Kar-Tech remote and confirm Digi-Star monitor is communicating with remote. Ensure both the remote and Digi-Star display are tared out, have someone stand on cart or pull down on the front saddle arm and confirm that the same weight is being displayed on both the remote and Digi-Star monitor.
- 25) When weight is removed ensure both the remote display and Digi-Star display return to zero. Ensure all tanks are tared out on remote by holding "Tare" for > 6 secs.
- 26) Power off remote and Digi-Star display, remove Digi-Star display from tank and package both components in the "components bag" that will be stored in Tank 1. Ensure loose harness connectors are tied up to protect them from shipping damage.