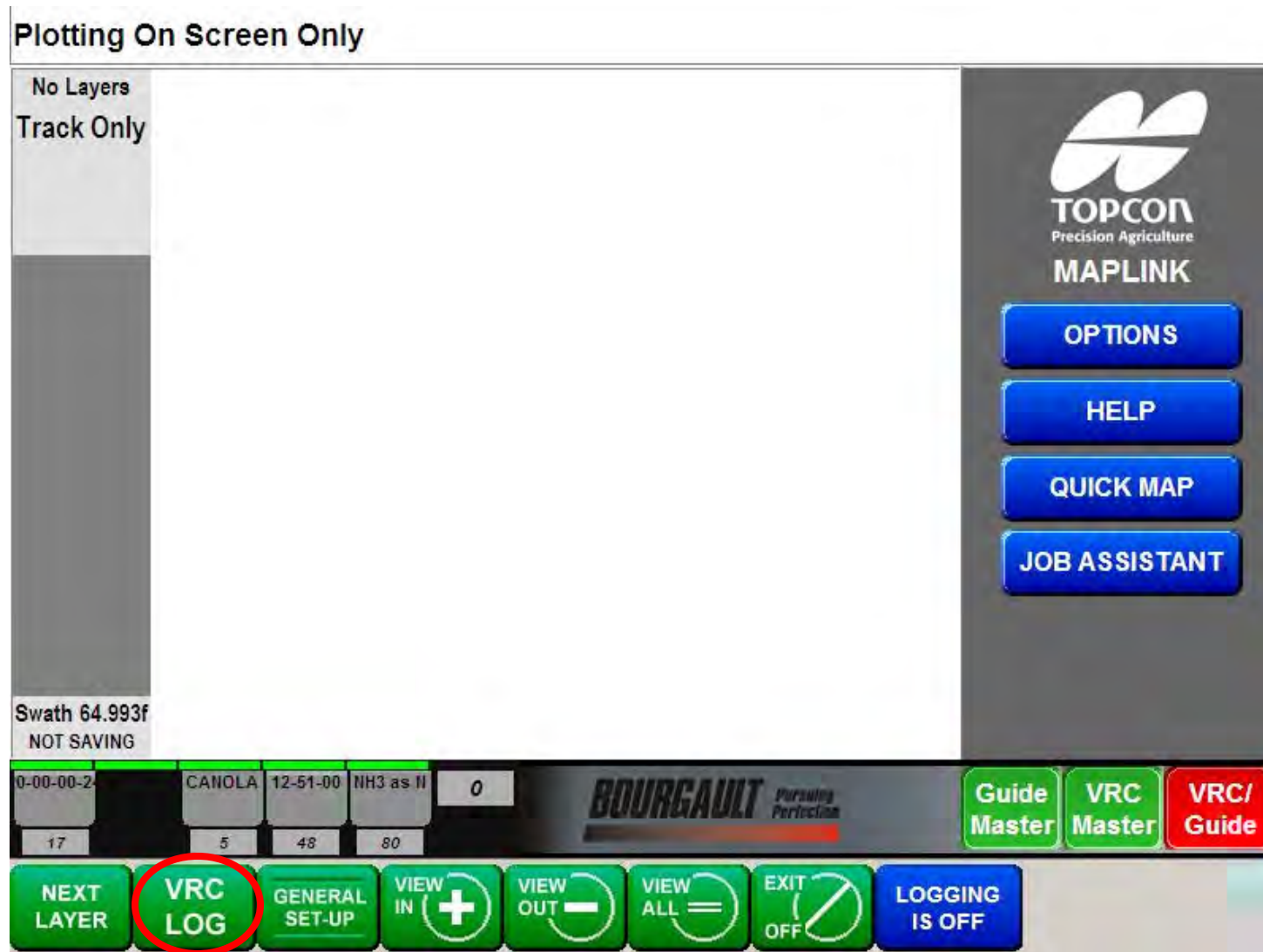
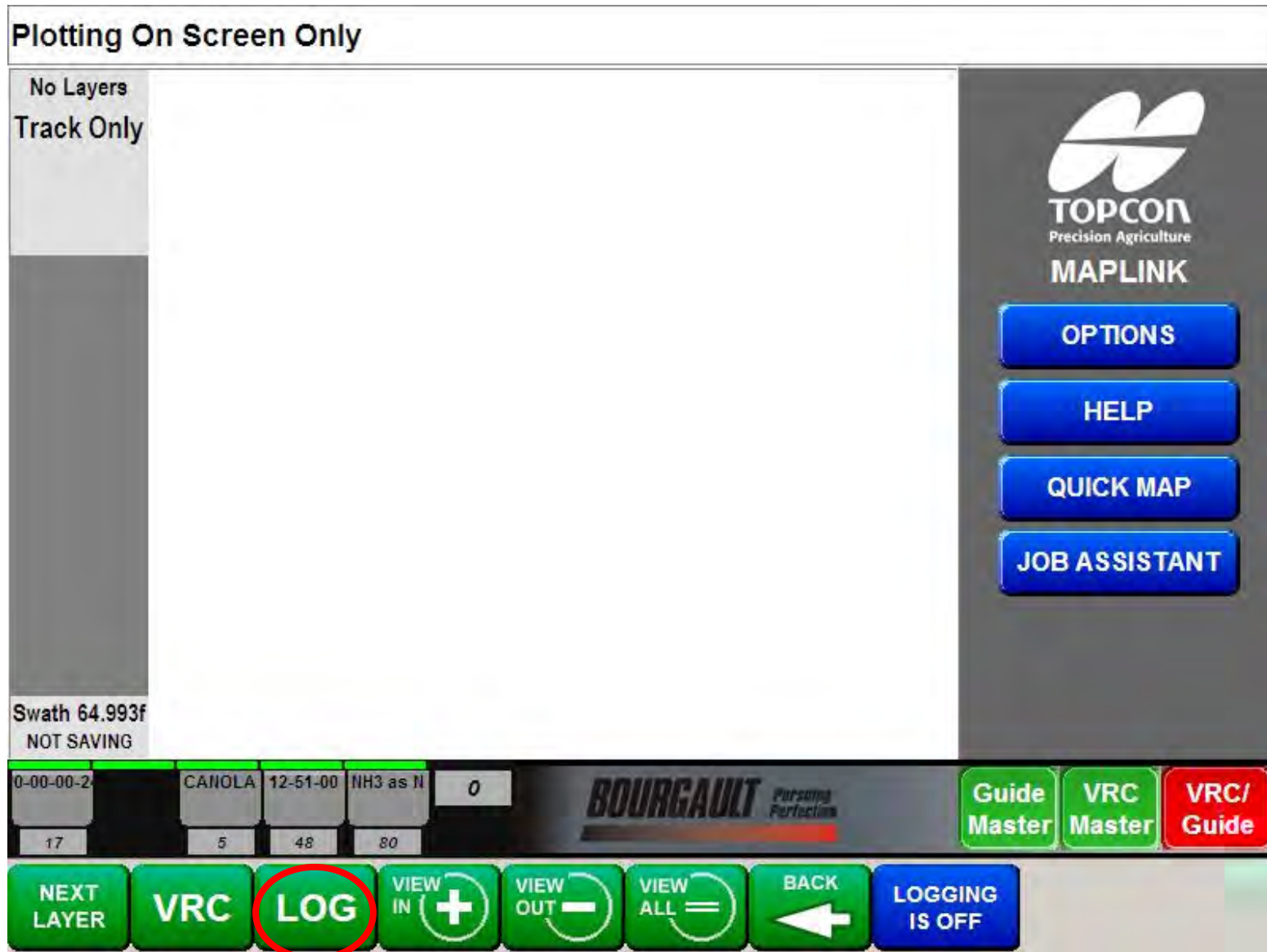


# Printing a VRC Log (As Applied Log)

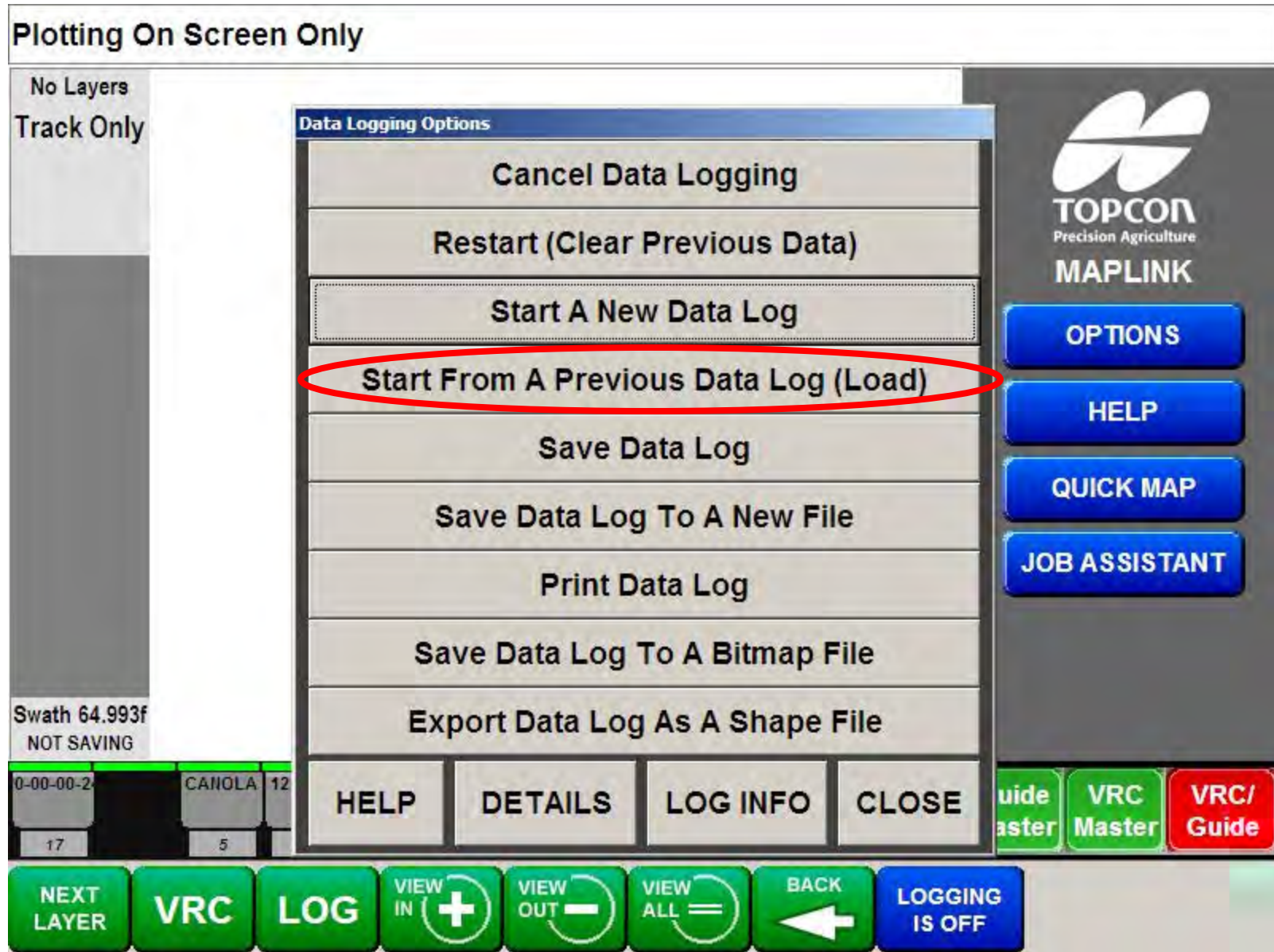
Select VRC LOG in the MAPLINK program



# Select LOG

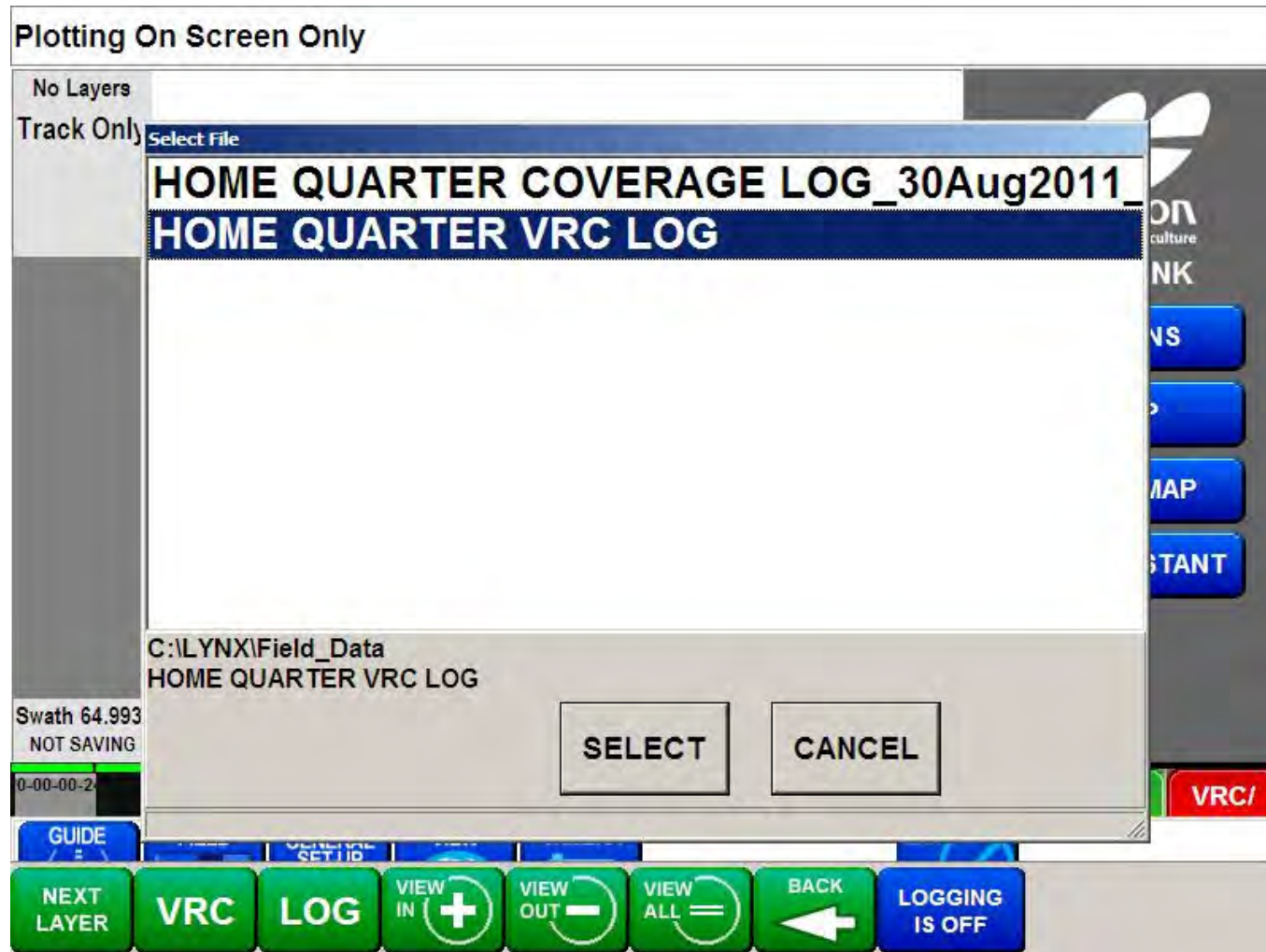


# Select Start From A Previous Data Log (Load)



Select the file you wish to load.

Only a VRC logged file will have the “as applied” data. The coverage file will not have any “as applied” data.





Select the layer (tank) that you wish to print

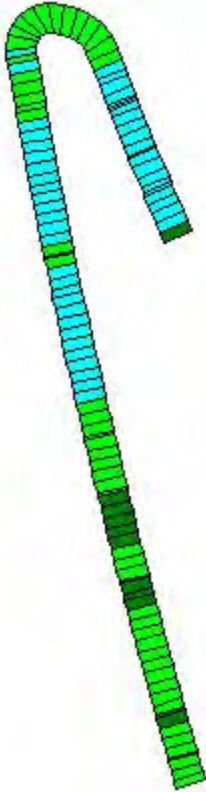
You can toggle to other layers by selecting NEXT LAYER

The screenshot displays the TOPCON MAPLINK software interface. At the top, it shows the save path: "Saving to: C:\LYNX\Field\_Data\HOME QUARTER VRC LOG.gdx". The main display area shows a field map with a curved path highlighted in green and blue. To the left of the map is a legend for "Layer 1 of 5" with the name "Layer 1 potash". The legend lists ten color-coded ranges: 0.0-3.3 (green), 3.3-8.0 (dark blue), 8.0-8.9 (purple), 8.9-13.2 (teal), 13.2-16.5 (red), 16.5-19.8 (light green), 19.8-23.1 (yellow), 23.1-26.4 (dark blue), 26.4-29.7 (magenta), and 29.7-33.1 (cyan). Below the legend, it indicates "Swath 64.993f" and "NOT SAVING". On the right side, there is a logo for "TOPCON Precision Agriculture MAPLINK" and four blue buttons: "OPTIONS", "HELP", "QUICK MAP", and "JOB ASSISTANT". At the bottom, there is a control panel with several buttons: "GUIDE", "FIELD", "GENERAL SET ID", "VIEW", "CAMERA", "EXIT", "NEXT LAYER" (circled in red), "VRC", "LOG", "VIEW IN" (with a plus sign), "VIEW OUT" (with a minus sign), "VIEW ALL" (with an equals sign), "BACK" (with a left arrow), and "LOGGING IS OFF". The background of the control panel features the "BOURGault" logo and the text "Pursuing Perfection".

When you have the layer you wish to print on screen select LOG

Saving to: C:\LYNX\Field\_Data\HOME QUARTER VRC LOG.gdx

Layer 1 of 5  
Layer 1  
potash



8.0-8.3  
8.4-8.7  
8.8-9.1  
8.8-13.2  
12.2-16.5  
16.5-19.8  
19.8-23.1  
23.1-26.4  
26.4-29.7  
29.7-33.1

Swath 64.993f  
NOT SAVING

**TOPCON**  
Precision Agriculture  
**MAPLINK**

OPTIONS  
HELP  
QUICK MAP  
JOB ASSISTANT

0-00-00-2 CANOLA 12-51-00 NH3 as N 0 **BOURGault** Potassium Distribution Guide VRC VRC/

GUIDE FIELD GENERAL VIEW CAMERA EXIT

NEXT LAYER VRC **LOG** VIEW + VIEW OUT - VIEW ALL = BACK LOGGING IS OFF

# Select Print Data Log

Plotting On Screen Only

No Layers  
Track Only

Swath 64.993f  
NOT SAVING

0-00-00-2  
17

CANOLA 12  
5

**Data Logging Options**

- Cancel Data Logging
- Restart (Clear Previous Data)
- Start A New Data Log
- Start From A Previous Data Log (Load)
- Save Data Log
- Save Data Log To A New File
- Print Data Log**
- Save Data Log To A Bitmap File
- Export Data Log As A Shape File

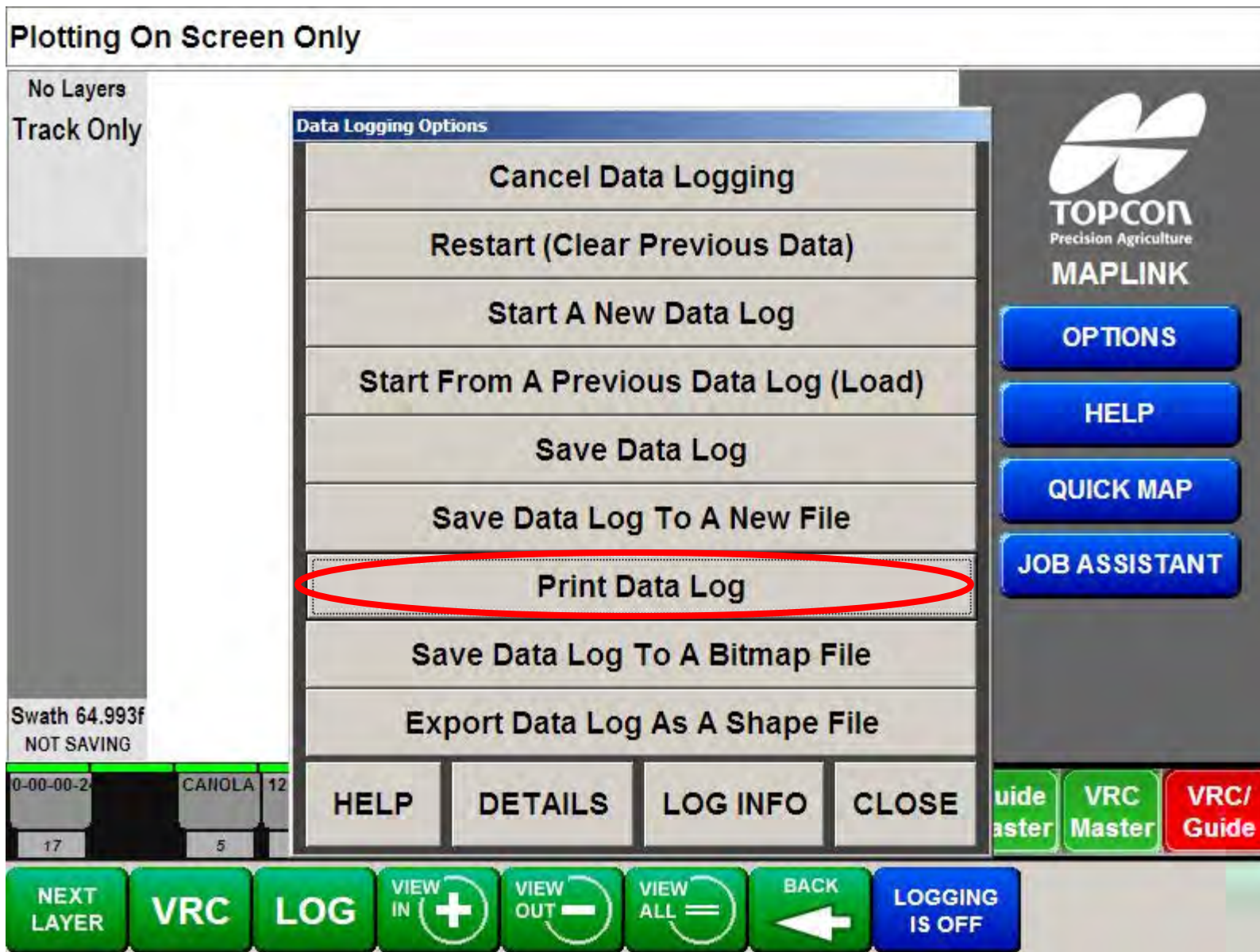
HELP DETAILS LOG INFO CLOSE

Guide Master VRC Master VRC/ Guide

NEXT LAYER VRC LOG VIEW IN + VIEW OUT - VIEW ALL = BACK LOGGING IS OFF

**TOPCON**  
Precision Agriculture  
**MAPLINK**

OPTIONS  
HELP  
QUICK MAP  
JOB ASSISTANT





Add any information you want on your print out

Saving to: C:\LYNX\Field\_Data\HOME QUARTER VRC LOG.gdx

Layer 1 of 5  
Layer 1  
potash

**LOG Details**

**Layer 1 Details**

Name: Layer 1

Applicant: potash

**Map Details - Same for all layers**

Creator: [ ]

Customer Name: [ ]

Farm Name: [ ]

Field Name: [ ]

Note: [ ]

HELP ACCEPT CANCEL

0-00-00-2

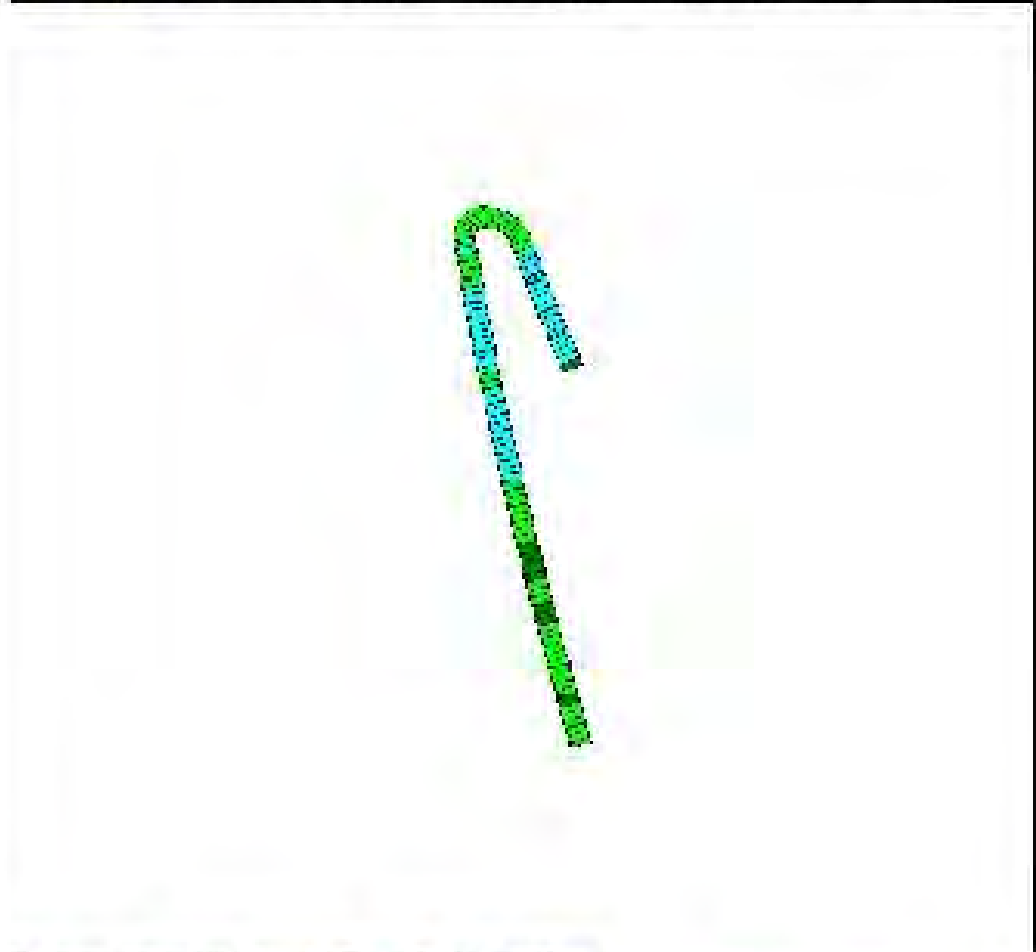
GUIDE FIELD GENERAL SET ID VIEW CAMERA

NEXT LAYER VRC LOG VIEW IN + VIEW OUT - VIEW ALL = BACK LOGGING IS OFF











VRC/



North 40 18 27 32780' N, West 100 20 42.73181' W, South 40 18 27 32780' N, East 100 20 42.73181' W (WGS84)



Map Width: 2784 feet Map Height: 1820 feet Map Area: 23.102 acres

 0-3.1	 6.8-9.2	 12.0-16.5	 19.9-23.1	 26.4-23.7
 3.3-6.6	 9.5-12.2	 16.5-19.8	 23.1-26.4	 23.7-23.1



Customer Name:	Applicant: potash
Field Name:	Note:
Farm Name:	Width: 19.31 m      64.865 feet
Layer: 1 of 5	Area Covered: 1.378 ha      3.408 acres

## As Applied Report

Repeat procedure from page 5 on for printing of other additional layers.