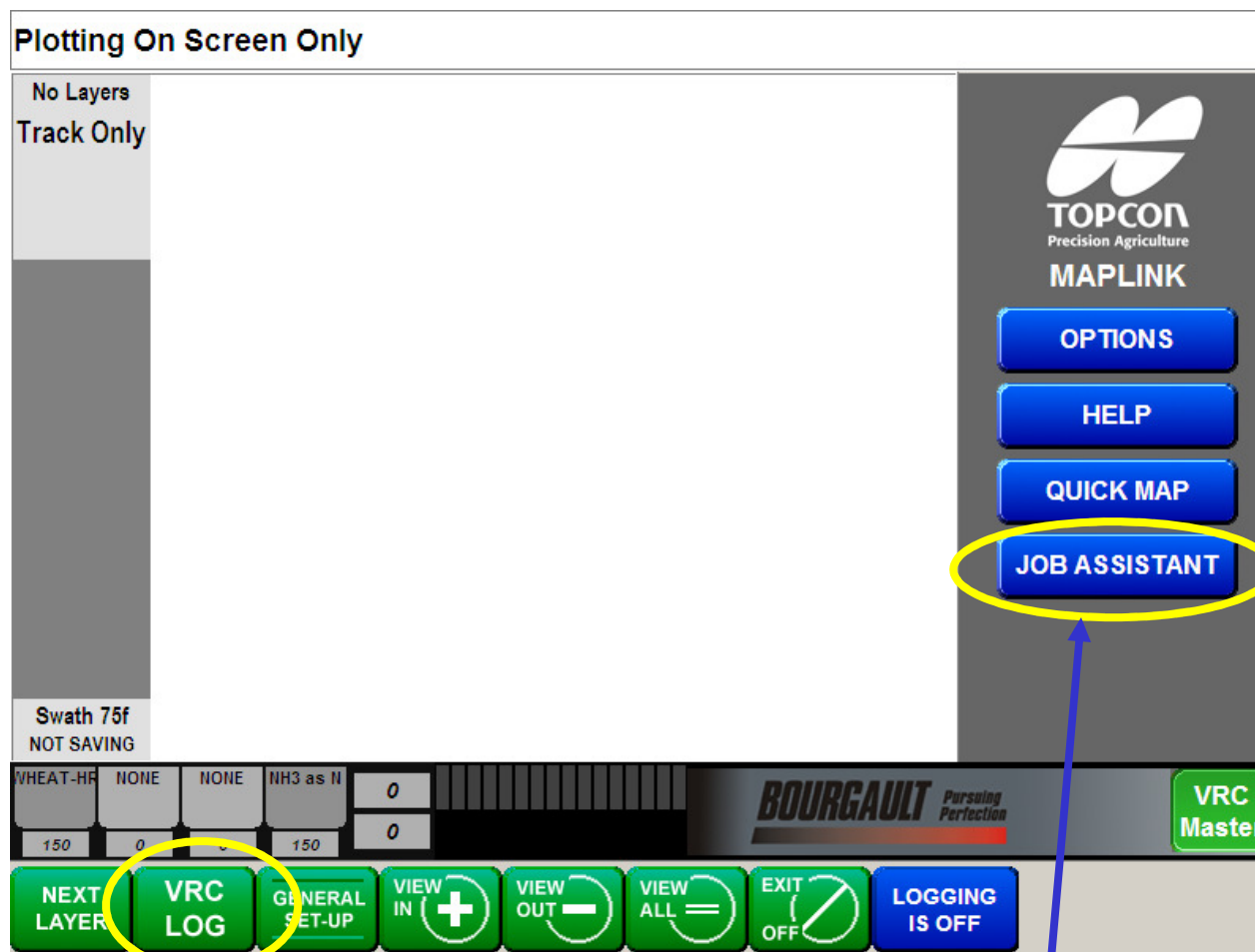


# How to Load a Variable Rate Map




You may select a VRC map by two different methods.

**Green VRC/LOG** or the **Blue JOB ASSISTANT**

# Loading a map method #1

Plotting On Screen Only

No Layers  
Track Only



OPTIONS  
HELP  
QUICK MAP  
JOB ASSISTANT

Swath 75f  
NOT SAVING

WHEAT-HF	NONE	NONE	NH3 as N	0
150	0	0	150	0

**BOURGAULT** Pursuing Perfection

VRC Master

NEXT LAYER VRC LOG GENERAL SET-UP VIEW IN (+) VIEW OUT (-) VIEW ALL (=) EXIT OFF (X) LOGGING IS OFF

Press VRC/LOG tab.

# Loading a map method #1

Plotting On Screen Only

No Layers  
Track Only



OPTIONS  
HELP  
QUICK MAP  
JOB ASSISTANT

Swath 75f  
NOT SAVING

WHEAT-HF	NONE	NONE	NH3 as N	0
150	0	0	150	0

**BOURGAULT** Pursuing Perfection

VRC Master

NEXT LAYER VRC LOG VIEW IN (+) VIEW OUT (-) VIEW ALL (=) BACK LOGGING IS OFF

Press VRC tab.

# Loading a map method #1

Plotting On Screen Only

No Layers  
Track Only

Swath 75f  
NOT SAVING

VHEAT-HR	NONE	NONE	NH3 as N	0
150	0	0	150	0

**Variable Rate Control**

Load VRC Prescription

Cancel VRC Operation

HELP INFO CLOSE

**TOPCON**  
Precision Agriculture  
**MAPLINK**

OPTIONS  
HELP  
QUICK MAP  
JOB ASSISTANT

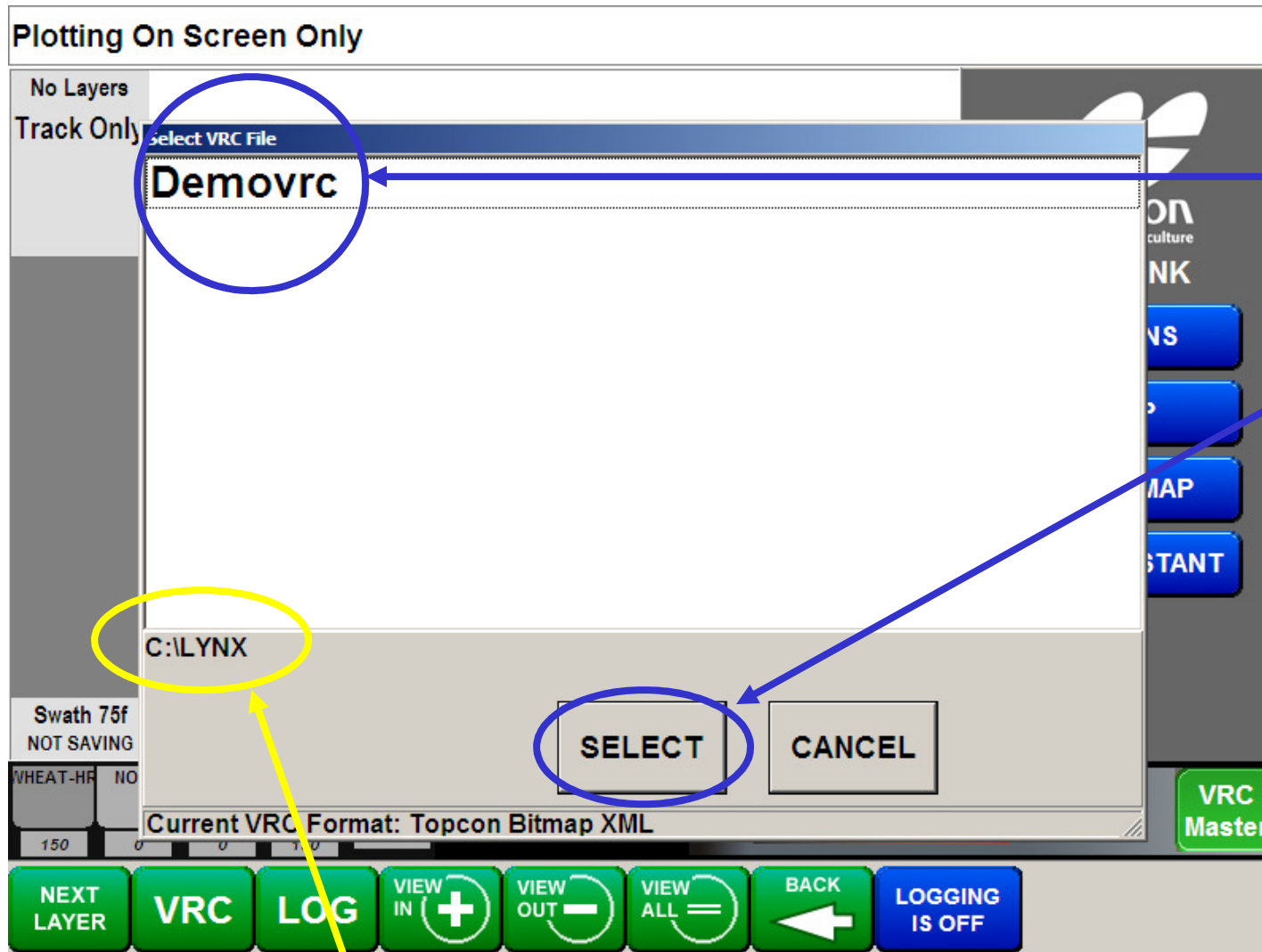
**BOURGAULT** Pursuing Perfection

VRC Master

NEXT LAYER VRC LOG VIEW IN + VIEW OUT - VIEW ALL = BACK LOGGING IS OFF

**Press Load VRC Prescription.**

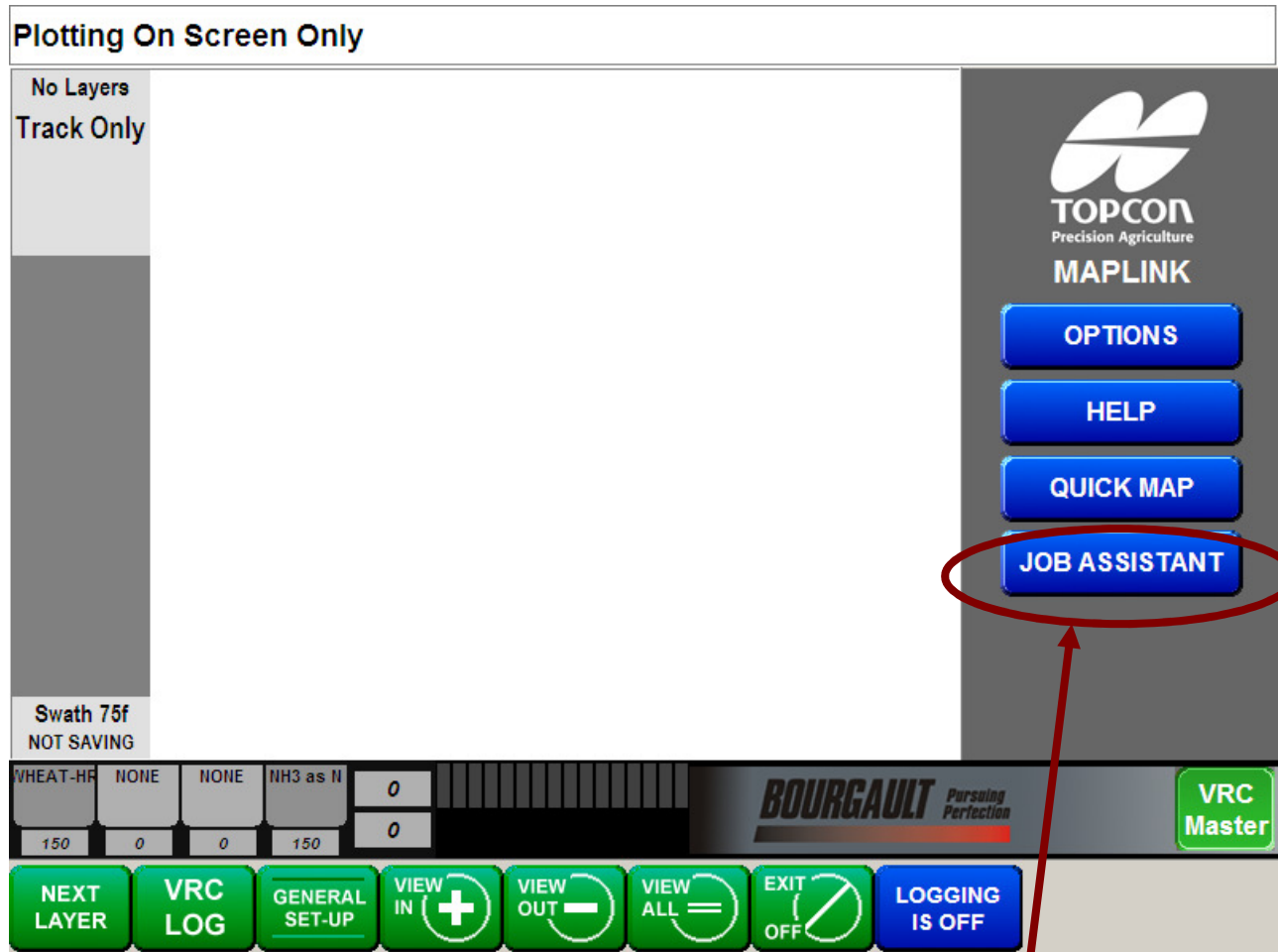
# Loading a map method #1



Pick the map you wish to use then press **SELECT**.

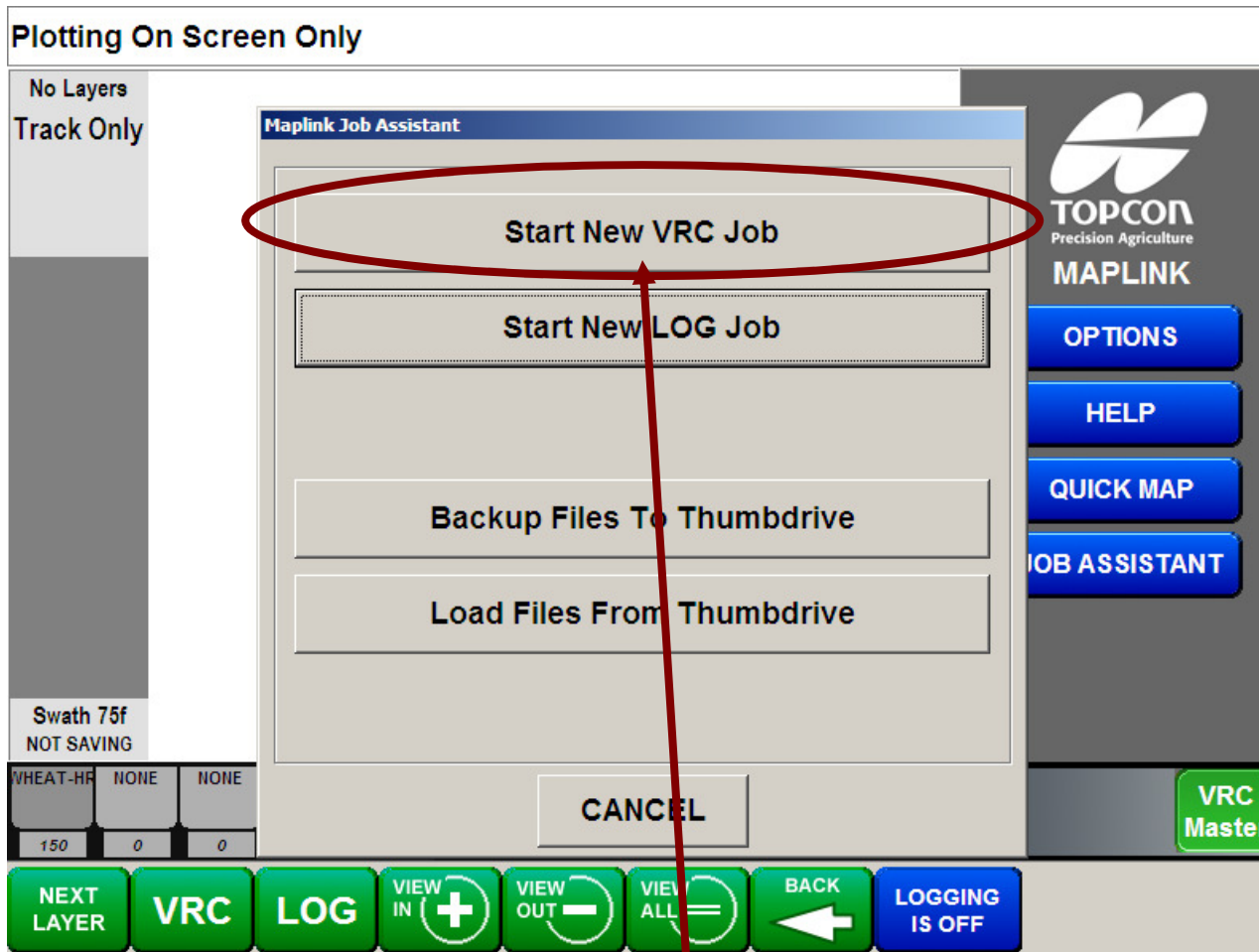
Shows where the files are located

## Loading a map method #2



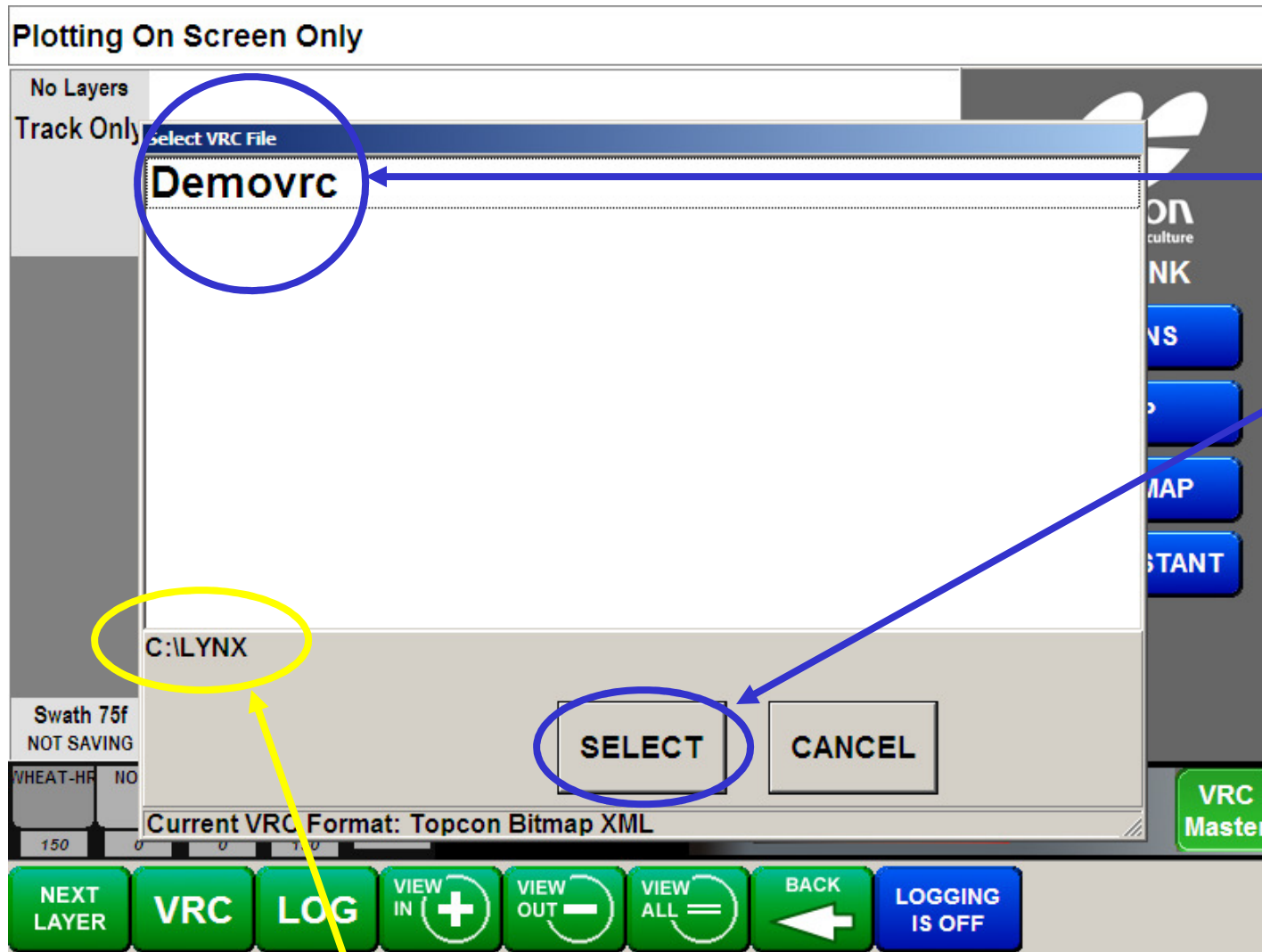
For method #2 press the JOB ASSISTANT tab.

## Loading a map method #2



Press the Start New VRC Job

## Loading a map method #2



Pick the map you wish to use then press **SELECT**.

Shows where the files are located



## Loading a VRC map methods #1 and 2

Plotting On Screen Only

No Layers  
Track Only

Swath 75f  
NOT SAVING

WHEAT-HR NONE NONE NH3 as N  
150 0 0 150 0

VRC Format: Topcon Bitmap XML

Pursuing Perfection

VRC Master

**Verify VRC File Demovrc.XML**

MARTIN  
Creator

KEE  
Customer Name

TEST  
Farm Name

TOP  
Field Name

MAKE A COFFEE  
Note

ha  
Area Unit

OK CANCEL

TOPCON  
Precision Agriculture  
MAPLINK

OPTIONS  
HELP  
QUICK MAP  
JOB ASSISTANT

NEXT LAYER VRC LOG VIEW IN VIEW OUT VIEW ALL BACK LOGGING IS OFF

Once you have selected your map you will be presented with a page with the details to confirm your map selection.

## Loading a VRC map methods #1 and 2

Plotting On Screen Only

Layer 1 of 4  
Bin Bin 1  
WHEAT  
VRC is ON

0.0-0.0  
0.0-0.0  
0.0-0.0  
0.0-0.0  
0.0-0.0  
0.0-0.0  
0.0-0.0  
0.0-0.0  
0.0-0.0  
0.0-0.0

Swath 75f  
NOT SAVING

WHEAT-HF NONE NONE IH3 as II 0  
150 0 0 150 0

**Log File Name Confirmation**

Use VRC File Name  
Create a New File Name  
Add To An Existing File  
Plot On Screen Only

TOPCON  
Precision Agriculture  
MAPLINK

OPTIONS  
HELP  
QUICK MAP  
JOB ASSISTANT

**BOURGAULT** Pursuing Perfection

VRC Master

NEXT LAYER VRC LOG VIEW IN + VIEW OUT - VIEW ALL = BACK LOGGING IS OFF

Select one of the tabs above and you have loaded your VRC Map.